

Draft Bradford Local Plan

Preferred Options



Duty to Cooperate Strategy

February 2021

This page is left intentionally blank

Contents

1. Introduction	1
2. Duty to Cooperate & Statement of Common Ground.....	1
3. Bradford Planning Context	2
Strategic Context for the Leeds City Region.....	2
Profile of Bradford District	2
Local Planning Policy	4
Duty to Cooperate Partners.....	5
4. Existing Collaboration Mechanisms & Governance Mechanisms	6
Leeds City Region Local Enterprise Partnership	6
West Yorkshire Combined Authority (WYCA).....	7
Leeds City Region Heads of Planning.....	7
Leeds City Region Strategic Planning (Duty to Cooperate) Meeting.....	7
Leeds City Region Statement of Co-operation for Local Planning	7
Leeds City Region Statement of Common Ground.....	7
Yorkshire & Humber Aggregates Working Party (AWP)	9
Yorkshire & Humber Waste Technical Advisory Body	10
5. Key Strategic Matters.....	10
6. Working Together Going Forward	11
Appendix 1: Duty to Cooperate - Strategic Issues	12
Appendix 2: Leeds City Region Statement of Common Ground	27
Appendix 3: Status of Neighbouring Authorities Local Plans	28
Appendix 4: Duty to Cooperate Activities	30
Appendix 5: Statement of Common Ground Template	41

Tables

Table 1: Leeds City Region Statement of Common Ground Signatories	8
---	---

Figures

Figure 1: Leeds City Region Local Authorities.....	2
--	---

Figure 2: Bradford Council & Neighbouring Local Authority Areas.....	3
Figure 3: Leeds City Region Statement of Common Ground Administrative Area	9

1. Introduction

- 1.1 Developing and delivering Local Plans involves a wide range of bodies, groups and individuals. Each will have a different role to play. Some will help to shape the contents and approach of the Plan's policies, others will contribute towards the evidence base that will underpin the plan, and others will help to deliver and implement the plan.
- 1.2 It is essential that the council works pro-actively, constructively and on an on-going basis with them as the Local Plan develops. This means meeting the requirements of the Duty to Cooperate. The degree to which the council has worked with its key partners will be rigorously tested as part of the examination of the Local Plan.

2. Duty to Cooperate & Statement of Common Ground

- 2.1 The Duty to Cooperate was introduced by the [Localism Act 2011](#)¹, which in turn amended the [Planning & Compulsory Purchase Act 2004](#)². It placed a legal duty on the local planning authorities and a range of public sector bodies to engage with one another in active, constructive and on-going basis to address cross-boundary, strategic planning matters as part of preparing Local Plans.
- 2.2 Its introduction coincided with the abolition of the system of Regional Spatial Strategies (RSS) between 2010 and 2013. The intention of the Duty is that it is undertaken before formal decisions are made on the Local Plans and decisions reflect the outcomes of this on-going co-operation. It is not necessarily a duty to agree, councils and other bodies need to show that they made every effort to Cooperate on strategic, cross boundary issues before their plans are submitted for examination.
- 2.3 Government policy on Local Plans, including the Duty to Cooperate is set out in the [National Planning Policy Framework \(NPPF\) \(February 2019\)](#)³, with further details set out in the [National Planning Practice Guidance \(PPG\) \(March 2014 onwards\)](#)⁴. The NPPF was revised with the section on duty to Cooperate being updated and requirement for councils to prepare Statements of Common Ground (SOCG) being introduced. The PPG was updated to reflect the changes to the NPPF.
- 2.4 The SOCG is a written record of the progress made by council and partner bodies to address cross boundary, strategic planning matters, and documents where effective co-operation is taking place during the plan-making process. It is also a way of demonstrating at examination that Local Plans are deliverable over their lifetime, as well as being based on effective joint working across local authority boundaries. In respect of local planning authorities, it forms part of the evidence to show they have complied with the Duty to Cooperate.

¹ [Localism Act 2011 – Section 110](#)

² [Planning & Compulsory Purchase Act 2004 – Section 33A](#)

³ [National Planning Policy Framework \(February 2019\) – Section 3: Paragraphs 24 to 27](#)

⁴ [Planning Practice Guidance \(March 2014 onwards\) – Plan Making \(Paragraphs 001 to 025 – Ref ID: 61-001-20180913 to 61-025-20180913\)](#)

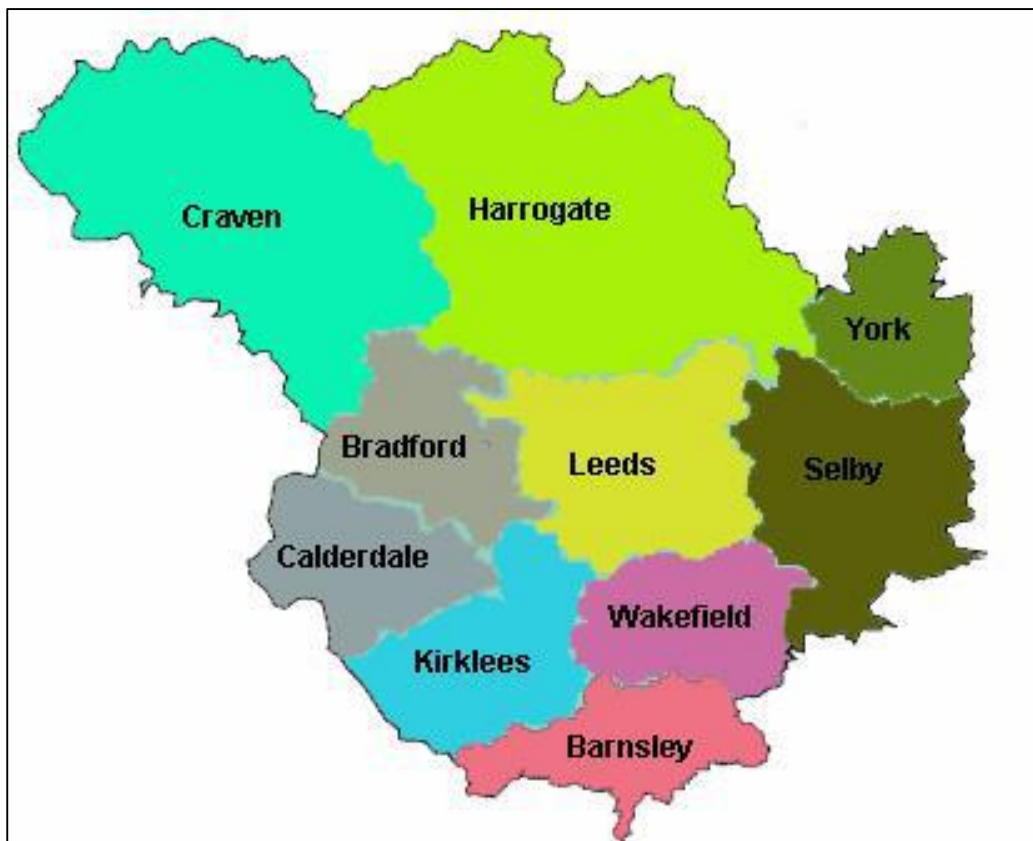
2.5 This document has been prepared to accompany Preferred Options (Regulation 18) version of the Bradford Local Plan consultation and forms part of the evidence base for the Plan. At this stage, it sets out the strategic issues relevant to Bradford and provides a basis for ongoing engagement with neighbouring authorities and other bodies. The overall aim is to ensure that SOCGs are agreed and signed, It is a live document and will be update at subsequent stages of the Local Plan. This may require some redrafting.

3. Bradford Planning Context

Strategic Context for the Leeds City Region

3.1 The Leeds City Region (LCR) covers the ten local authority areas of Barnsley, Bradford, Calderdale, Craven, Harrogate, Kirklees, Leeds Selby, Wakefield and York (see Figure 1). North Yorkshire County Council is also a key partner. The LCR is home to over three million people.

Figure 1: Leeds City Region Local Authorities



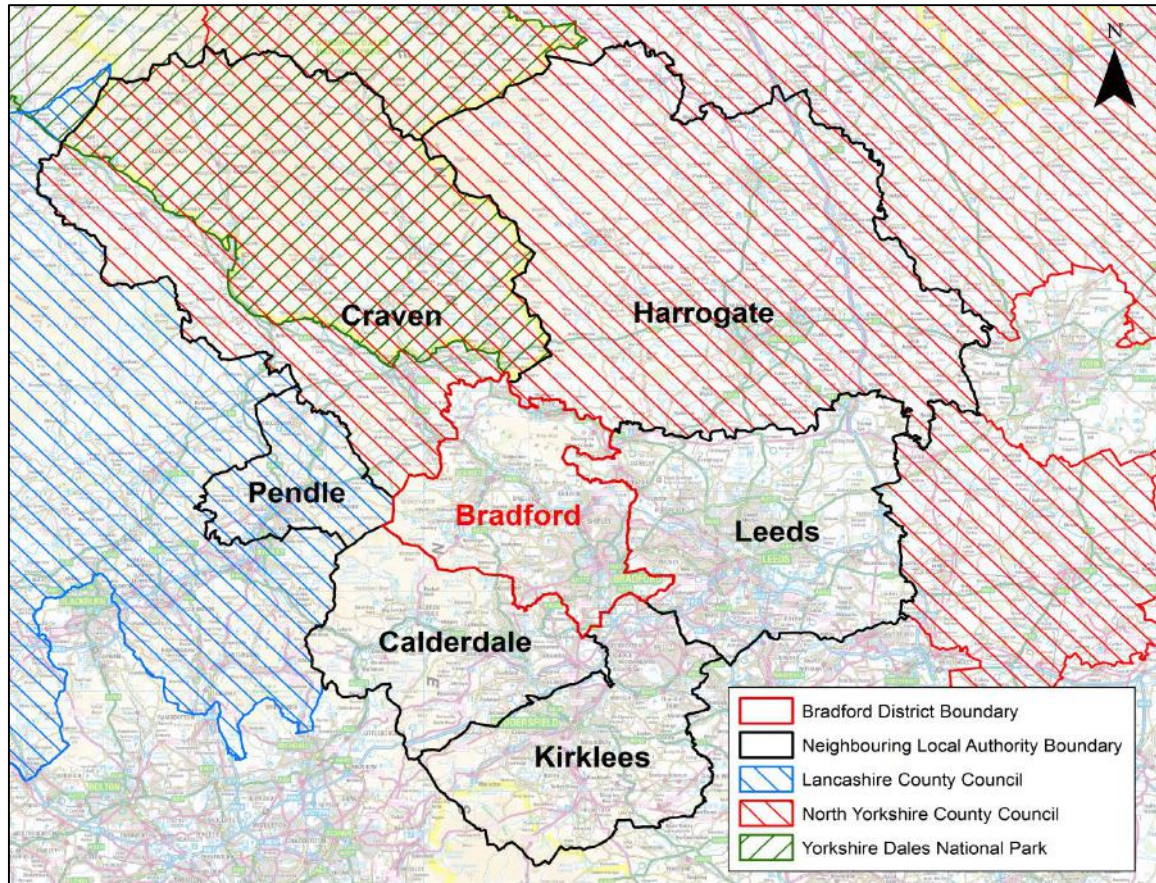
3.2 There is a long legacy of working together on key strategic planning matters. Details of current co-operation and joint working is set out in section 4.

Profile of Bradford District

3.3 Bradford District covers an area of 370km² and is located on the north western part of the West Yorkshire sub-region. Boundaries are shared with Calderdale, Kirklees,

Leeds, Lancashire (Pendle District), North Yorkshire (Craven and Harrogate Districts), and the Yorkshire Dales National Park (see Figure 2). The majority of the district is covered by the South and West Yorkshire Green Belt.

Figure 2: Bradford Council & Neighbouring Local Authority Areas



Bradford Metropolitan District Council Licence
 © Crown copyright and database rights 2018 OS 0100019304

- 3.4 Despite being home to one of the largest populations in the country, only one third of the area is urban. It consists of a series of steep slopes dissected by the rivers Aire and Wharfe and a number of smaller rivers, including Bradford Beck and the River Worth. The valley sides are commonly very steep, in contrast to the flat nature of the valley bottoms. The main urban areas and transport routes occur within the valley floor of the District.
- 3.5 The main urban area comprises Bradford, Shipley and Baildon. Along the Aire Valley north west of Shipley are the towns of Bingley, Keighley and Silsden, and the settlement of Steeton with Eastburn. To the north is Wharfedale, Ilkley and the smaller settlements of Menston, Burley in Wharfedale and Addingham. Pennine villages include Haworth, Oakworth, Harden and Cullingworth.
- 3.6 Bradford District's natural environment and open spaces provide an important asset in terms of the desirability of the area as a place to live, work and visit, along with the provision of space for sport and recreation uses. Bradford District contains a rich diversity of habitats such as a large part of the South Pennine Moors, and wildlife

including many internationally, nationally and regionally notable species of flora and fauna.

- 3.7 The District also possesses a rich architectural and archaeological heritage associated with its industrial past, including the UNESCO World Heritage Site of Saltaire. There are also 51 Conservation Areas and 4,751 Listed Buildings, twenty of which are Grade I Listed. In addition, there is one historic battlefield and fourteen registered parks and gardens.
- 3.8 Bradford has a population of 539,800 people, and is the fifth largest local authority in England in terms of population (after Birmingham, Leeds, Sheffield and Manchester)⁵. It is also one of the youngest populations in the country with one-quarter of people aged under 20, whilst nearly seven in ten are aged under 50. Bradford has the third highest percentage of the under 16 population in England after Barking and Dagenham, Slough and Luton. Projections show that the district's population is expected to grow to 560,133 by the end of the Local Plan period in 2038, an increase of 3.8%⁶.
- 3.9 The District's population live in 204,525 households. Projections show that the number of households will continue to growth over the lifetime the Local Plan, increasing by 18,276 (8.9%) to reach 222,801 in 2038⁷.

Local Planning Policy

- 3.10 The existing planning policy framework for Bradford District is contained in the documents that make up the Bradford Local Plan – Core Strategy Development Plan Document (DPD); Bradford City Centre Area Action Plan (AAP); Shipley & Canal Road AAP; Waste Management DPD (all Adopted 2017) – and the saved policies from the Replacement Unitary Development Plan for Bradford District (October 2005) as well as the adopted neighbourhood plans for Burley in Wharfedale (2018) and Addingham (2020).
- 3.11 Following changes to the planning system including the publication of the revised [National Planning Policy Framework \(NPPF\) \(February 2019\)](#) and introduction of a standard methodology for calculating local housing need, together with changes in local circumstances, the Council considered it appropriate to undertake a Partial Review of some elements of the Core Strategy DPD and to prepare an Allocations DPD. Subsequently it was determined more appropriate to produce a combined Local Plan for the district including policies and site allocations.
- 3.12 The Local Plan and its policies will help the Council to determine planning applications and inform key infrastructure and investment priorities. They set out the strategic requirements for housing, employment, transport, retail, leisure and

⁵ [Bradford District Population Update – Intelligence Bulletin, CBMDC \(July 2020\)](#) based on Mid-Year Population Estimates 2019 (ONS, June 2020)

⁶ [2020 Population Projections – Intelligence Bulletin, CBMDC \(March 2020\)](#) (based on Population Projections 2020 (ONS, March 2020)

⁷ [Household Projections for England \(2018 based\) \(ONS, June 2020\)](#)

environment. It will identify the sites and policies to support the delivery of the development requirements outlined these policies.

- 3.13 The timetable for the Local Plan is set out in the council's Local Development Scheme (July 2018). This timetable is kept under regular review.

Duty to Cooperate Partners

- 3.14 The Duty to Cooperate requires us to work closely with neighbouring local planning authorities, with whom we share are boundary and where there is potential for cross boundary issues to arise. In the context of the Bradford, these neighbours are:

- Calderdale Council
- Craven District Council
- Harrogate District Council
- Kirklees Council
- Lancashire County Council
- Leeds City Council
- North Yorkshire County Council
- Pendle District Council
- Yorkshire Dales National Park Authority

- 3.15 As mentioned above the Duty to Cooperate covers a range of public bodies as well as councils. These are set out in the [Town & Country Planning \(Local Planning\) \(England\) Regulations 2012 \(as amended\)](#)⁸ and the PPG⁹, and consist of:

- Civil Aviation Authority
- Environment Agency
- Highways England
- Historic England
- Homes England (formerly the Homes & Communities Agency)
- Integrated Transport Authorities (West Yorkshire Combined Authority)
- Marine Management Organisation
- Natural England
- NHS Clinical Commissioning Groups
- NHS Service Commissioning Board
- Office of Rail & Road (formerly the Office of the Rail Regulator)

⁸ [Town & Country Planning \(Local Planning\) \(England\) Regulations 2012 \(as amended\) – Part 2 – Regulation 4](#)

⁹ [Planning Practice Guidance \(March 2014 onwards\) – Maintain Effective Co-operation: Duty to Cooperate \(Paragraphs 029 to 033 & 075. Ref ID: 61-029-20190315 to 61-033-20190315 and 61-075-20190723\)](#)

- The Mayor of London
 - Transport for London
- 3.16 Given Bradford's location engagement is not required with the Mayor of London or Transport for London.
- 3.17 In addition, the Duty covers the West Yorkshire Combined Authority (WYCA). Whilst they are not covered under the Duty to Cooperate legislation, Local Enterprise Partnerships and Local Nature Partnerships, planning authorities should Cooperate with both bodies, and have regard to their activities when preparing Local Plans. In the local context, they are the Leeds City Region Enterprise Partnership, the Yorkshire West Local Nature Partnership and Pennine Prospects (South Pennines LNP).
- 3.18 As well as the bodies highlighted above, the council also seeks to engage with a wider range of stakeholders in developing planning policy. These include Government departments/agencies (e.g. The Coal Authority, Health & Safety Executive, Sport England), emergency services (police, fire and rescue, ambulance), utilities and infrastructure providers (electricity, gas, water, telecommunications, transport), town and parish councils, conversation bodies/groups, community groups, businesses and voluntary groups, together with local people.
- 3.19 The council maintains a consultation database. Details of how the council will engage with stakeholders and communities are set out in the [Statement of Community Involvement \(SCI\)](#), adopted in November 2018.

4. Existing Collaboration Mechanisms & Governance Mechanisms

- 4.1 There is a strong history of collaboration on strategic planning issues in the Yorkshire and Humber region. This collaboration has continued through the Leeds City Region and between individual local planning authorities. The City Region has taken the lead on organising an agreed approach to the Duty to Cooperate. There has also been joint working on the production of evidence which can be used to inform local plans on issues such as strategic employment land supply and housing markets.

Leeds City Region Local Enterprise Partnership

- 4.2 The [Leeds City Region Local Enterprise Partnership \(LEP\)](#) was established in 2011 and brings together eleven local authorities (Barnsley, Bradford, Calderdale, Craven, Harrogate, Kirklees, Leeds, Selby, Wakefield and York as well as North Yorkshire County) and the private sector to deliver economic growth.
- 4.3 One of the main areas of work for the LEP has been the preparation of the [Leeds City Region Strategic Economic Plan \(SEP\)](#). The SEP sets the economic policy framework for a series of interconnected delivery plans that will detail what will be delivered, the partnership required to do this, by when and with what funding in specific policy areas. These include plans for Skills and Employment, Digital, Transport, Green Infrastructure, Trade and Investment, and Housing, Regeneration and Infrastructure.

West Yorkshire Combined Authority (WYCA)

- 4.4 The five West Yorkshire authorities (Bradford; Calderdale; Kirklees; Leeds & Wakefield) together with York City Council, the business sector (through the Leeds City Region LEP) and the former Transport Executive (Metro) form the [West Yorkshire Combined Authority \(WYCA\)](#). Its aim is to deliver an outstanding economy with better connectivity and amongst other work it is responsible for the preparation of the West Yorkshire Transport Strategy and helping to deliver the Leeds City Region Strategic Economic Plan.
- 4.5 The Combined Authority's [Place Panel](#) consists of group of relevant local authority portfolio holders who are responsible of planning. It advises the Combined Authority and the Leeds City Region Local Enterprise Partnership in support of their ambition to secure inclusive and clean growth. The panel approves the work and outcomes of the Strategic Planning Group and forwards these to other senior/chief officer groups.

Leeds City Region Heads of Planning

- 4.6 This is a senior officer group that brings together the Heads of Planning from the City Region to address key planning issues. It oversees the work of the Strategic Planning Group.

Leeds City Region Strategic Planning (Duty to Cooperate) Meeting

- 4.7 This group meets every two months and is attended by the eleven local authorities of the City Region. Highways England, the Environment Agency and Homes England attend periodically as and when there are relevant issues. It is formally recognised as a sub-group that reports to the Leeds City Region Heads of Planning.

Leeds City Region Statement of Co-operation for Local Planning

- 4.8 In July 2014, the first iteration of the Leeds City Region Statement of Cooperation for Local Planning was endorsed by the Leeds City Region Leaders Board and subsequently by the West Yorkshire Combined Authority in September 2014. The statement has now been revised six times and the latest version was produced in June 2018.
- 4.9 The statement sets out the processes and practical steps that Leeds City Region authorities will undertake to meet the duty to cooperate. The statement confirms that city region authorities are committed to partnership working to ensure a joined up approach to spatial planning including tackling cross boundary issues and agreeing strategic priorities.

Leeds City Region Statement of Common Ground

- 4.10 The latest iteration of the [Leeds City Region Statement of Common Ground](#) (see Appendix 2) was endorsed by the West Yorkshire Combined Authority in 2020. Bradford Council is a signatory to the statement alongside the other bodies shown in Table 1

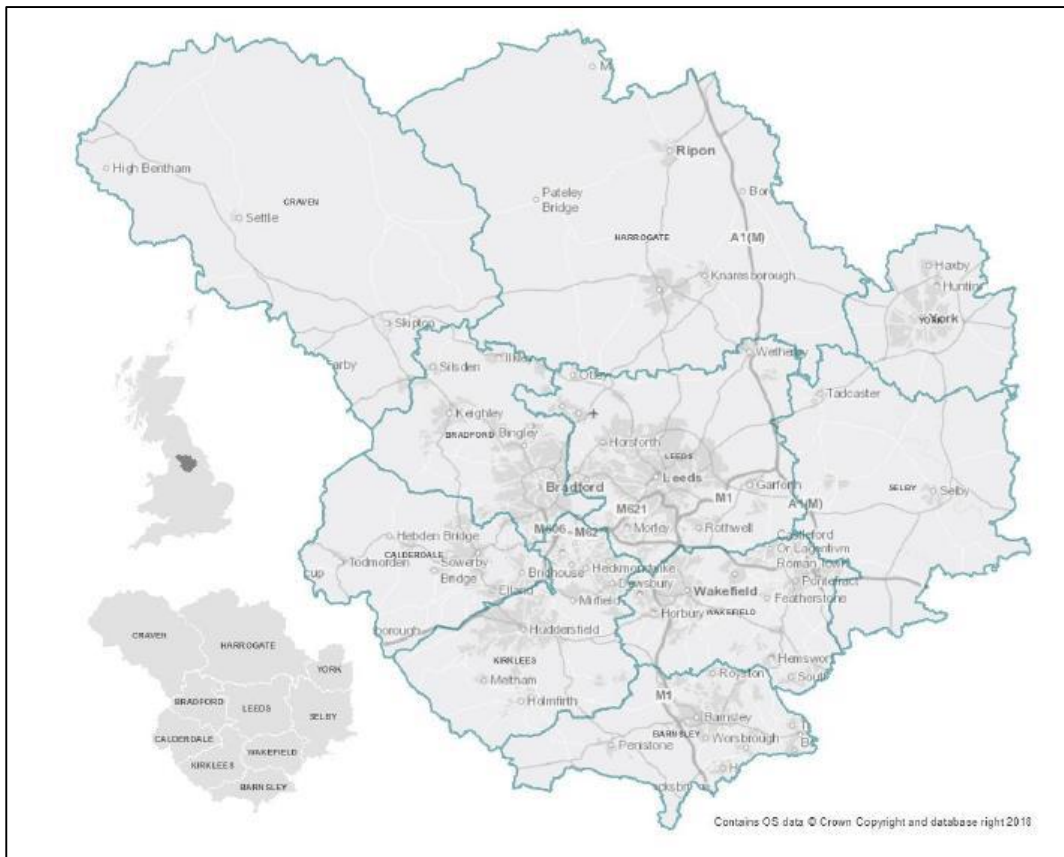
4.11 The statement sets out the joint working that occurs in the city region on planning matters, the approach to planning for housing that will be adopted and details the matters on which the signatories agree with regard to:

- Inclusive Growth
- Housing
- Green Belt
- Employment
- Transport
- Minerals and Waste
- Green and Blue infrastructure

Table 1: Leeds City Region Statement of Common Ground Signatories

Signatory	Relationship to CBMDC
Barnsley Metropolitan Borough Council	Leeds City Region member
Calderdale Council	Leeds City Region Member West Yorkshire Council Council adjacent to Bradford
City of York Council	Leeds City Region Member
Craven District Council	Leeds City Region Member Council adjacent to Bradford
Harrogate Borough Council	Leeds City Region Member Council adjacent to Bradford
Kirklees Borough Council	Leeds City Region Member West Yorkshire Council Council adjacent to Bradford
Leeds City Council	Leeds City Region Member West Yorkshire Council Council adjacent to Bradford
North Yorkshire County Council	Leeds City Region Member Council adjacent to Bradford
Selby District Council	Leeds City Region Member
Wakefield Metropolitan District Council	Leeds City Region Member
West Yorkshire Combined Authority	Co-ordinates strategic planning in Leeds City Region

Figure 3: Leeds City Region Statement of Common Ground Administrative Area



- 4.12 The statement will be kept under review and maintained to reflect the most up to date and readily available information.

Yorkshire & Humber Aggregates Working Party (AWP)

- 4.13 The Yorkshire and Humber Aggregates Working Party (AWP) meets on an annual basis. It covers the seventeen Mineral Planning Authorities in Yorkshire and the Humber over the sub-regional areas of North Yorkshire, West Yorkshire, South Yorkshire and Humber. It is one of nine similar working parties established in the mid-1970s throughout England and Wales. Its membership consists of the seventeen mineral planning authorities¹⁰, Ministry of Housing, Communities & Local Government (MHCLG), industry representatives and the Crown Estate. Members of adjoining Aggregates Working Parties (East Midlands, North East and North West) are also invited to attend.
- 4.14 The AWP has a role in planning for a steady and adequate supply of aggregate minerals by providing data on sales, reserves and planning permissions for aggregate minerals and providing technical advice on the supply and demand for aggregates from their areas. The AWP publishes an annual monitoring report as well

¹⁰ The mineral planning authorities in Yorkshire & Humber are: Barnsley; Bradford; Calderdale; Doncaster; East Riding of Yorkshire; Kingston upon Hull; Kirklees; Leeds; North East Lincolnshire; North Lincolnshire; North York Moors National Park; North Yorkshire; Rotherham; Sheffield; Wakefield; York; and Yorkshire Dales National Park.

as scrutinising and providing advice on the Local Aggregates Assessments (LAA) produced by each of the four sub-regional areas.

- 4.15 A joint LAA is prepared for the West Yorkshire, covering Bradford, Calderdale, Kirklees, Leeds and Wakefield area. The latest [version](#) was agreed and published in 2019. The LAA sets out information about the sales and reserves of aggregate minerals within West Yorkshire and the need for aggregates, based on the average sales from the last ten years and other relevant information.

Yorkshire & Humber Waste Technical Advisory Body

- 4.16 This group consists of the seventeen Waste Planning Authorities in the Yorkshire & Humber region and the Environment Agency. It was established in April 2014 with aim for improving co-ordination on waste planning issues and to meet the requirements of the Duty to Cooperate.

5. Key Strategic Matters

- 5.1 National Planning Practice Guidance advises that Paragraph 20 of the NPPF sets out the matters that strategic policies in plans should make provision for. This is not an exhaustive list and authorities will need to adapt it to meet their local circumstances and needs. For local planning authorities this is linked to matters set out in sections 33A(4) and 19(1B) to 19 (1E) of the Planning & Compulsory Purchase Act 2004.

Strategic policies should set out an overall strategy for the pattern, scale and quality of development, and make sufficient provision for:

- a) housing (including affordable housing), employment, retail, leisure and other commercial development;*
- b) infrastructure for transport, telecommunications, security, waste management, water supply, wastewater, flood risk and coastal change management, and the provision of minerals and energy (including heat);*
- c) community facilities (such as health, education and cultural infrastructure); and*
- d) conservation and enhancement of the natural, built and historic environment, including landscapes and green infrastructure, and planning measures to address climate change mitigation and adaptation.*

- 5.2 The NPPF goes on to highlight the importance of joint working to meet development requirements that cannot be wholly met within a single local planning area – for instance, because of a lack of physical capacity or because to do so may cause significant harm to the principles and policies of the NPPF.
- 5.3 Bradford Council has undertaken a review of the strategic matters where co-operation may be required during the preparation of the Core Strategy DPD: Partial Review and Allocations DPD. This has been informed by the matters identified in the NPPF, the Leeds City Region Statement of Common Ground and responses received from Duty to Cooperate partners as part of the Core Strategy Partial Review initial consultation.

- 5.4 It has also been informed by examining information on previous Duty to Cooperate activities undertaken when preparing previous plans for Bradford district as well as neighbouring areas (see Appendix 1).

6. Working Together Going Forward

- 6.1 The Duty to Cooperate requires Local Planning Authorities to constructively and actively engage with relevant bodies as part of an on-going process, which does not stop at the point the Bradford Local Plan (is adopted. It is an iterative process that will develop and change over time.
- 6.2 The Council seeks to ensure continued engagement with partners to manage strategic cross boundary matters and to develop effective planning policies and strategies for supporting and delivering growth. The following approaches may be used:
- Formal consultation on emerging plans;
 - Bespoke meetings with Duty to Cooperate partners;
 - Engagement with infrastructure providers as part of developing the Local Infrastructure Plan;
 - Engagement with Duty to Cooperate bodies and others in developing the evidence base;
 - Duty to Cooperate workshop(s);
 - Scrutiny of neighbouring local plan authorities adopted/emerging Local Plans and evidence bases;
 - On-going liaison and participation in sub-regional/regional activities.
- 6.3 Details of Duty to Cooperate activities will be formally noted and included within future editions of this document (see Appendix 4: Duty to Cooperate Activities). The aim of this process is to, on an on-going basis:
- Clearly identify those issues that are strategic in nature and have cross boundary issues;
 - Identify and agree, where appropriate, suitable approaches that would address or overcome them; and
 - Establish and agree, where appropriate, means of tracking progress in implementing these suitable approaches.
- 6.4 This document will be updated as part of an iterative process at each stage of the Bradford Local Plan.

Appendix 1: Duty to Cooperate - Strategic Issues

Section 110 of the Localism Act 2011, imposes a duty on councils to Cooperate with other Local Planning Authorities (LPA's) and proscribed bodies on planning issues that cross administrative boundaries. The duty is explained in the National Planning Policy Framework at paragraphs 24 to 27 with additional guidance in the plan making section of National Planning Practice Guidance. The intention of the legislation is that the duty is carried out before councils make formal decisions on plans, with those decisions taking account of the outcome of the co-operation process. The table below sets out the latest analysis of potential issues and proposed actions that have been identified to date which may impact on neighbouring LPA's and the interests of proscribed bodies. This information will be central to demonstrating that the duty has been carried out appropriately.

	Strategic Issue	Potential Impact	Areas/Bodies Affected	Potential Evidence	Proposed Resolution	Proposed Monitoring	Proposed Actions/Response	NPPF Link
	<i>Summary of the Issue</i>	<i>Description of why it is a (potential) cross boundary issue</i>	<i>Details of the authorities and other bodies affected</i>	<i>Potential Evidence to show issue</i>	<i>How the issue can be overcome or managed</i>	<i>How the issue will be monitored – key targets and indicators</i>	<i>Agreed Actions (Lead; Timescale)</i>	<i>Relevant strategic priority in NPPF paragraph 20</i>
1	Strategic Growth & Infrastructure							
1A	Holme Wood – scale and type of growth as well as associated infrastructure	<p>Holme Wood has been identified as an area for wide ranging economic, social, community and housing renewal, and is a key component of the regeneration strategy for Bradford South East.</p> <p>It continues to be focus for the renewal of the existing estate and sensitive expansion of development to meet housing and employment needs.</p> <p>The area includes a significant section of Green Belt to the south east of Bradford, bordering the Leeds administrative boundary.</p> <p>Total growth includes 286 dwellings (13 sites) within the existing built up area as well as 1,454 dwellings (8 sites) and 9.06ha of employment land (1 site) for class B2, B8 and E (formerly B1a, b and c) uses within the Green Belt.</p> <p>The existing Holme Wood Local Centre will be protected and enhanced. Development will be supported by relevant infrastructure including Green Infrastructure, open spaces, recreational areas, ecological improvements, landscaping, sustainable travel options/connections, South East Bradford Access Road (subject to feasibility and option analysis) and Mass Transit (should this</p>	<p>Kirklees Council</p> <p>Leeds City Council</p> <p>West Yorkshire Combined Authority</p> <p>Highways England</p> <p>Homes England</p> <p>Historic England</p>	Local Plan	<p>Requires cross agency project team with defined work programme to fully detail key issues</p> <p>Proposed growth area likely to be progressed through further evidence gathering and masterplanning / urban design work.</p> <p>Requires a coordinated approach to transport investment.</p> <p>Addressing wider regeneration / deprivation issues in Bradford SE also critical to success.</p>	Authority Monitoring Report	Requires cross agency project team with defined work programme to fully detail key issues	Homes, Jobs and infrastructure needed.

	Strategic Issue	Potential Impact	Areas/Bodies Affected	Potential Evidence	Proposed Resolution	Proposed Monitoring	Proposed Actions/Response	NPPF Link
		project move forward and prove feasible).						
1B	Apperley Bridge/Esholt Strategic Employment Area	<p>Former Esholt Yorkshire Water Treatment Works has been identified as a key strategic scale employment opportunity. The site is previously developed land within the Green Belt.</p> <p>The site is located on the north eastern edge of Bradford, close to the local authority boundary with the Leeds City Council area.</p> <p>It forms part of a strategic investment corridor towards Leeds-Bradford Airport.</p> <p>Infrastructure impacts and capacity, plus relationship with proposed uses in relation to the wider area will need to be considered.</p> <p>31.55ha of land (2 sites) (NE22/E & NE23/E) have been identified for employment use over the plan period. The site has the potential to support the growth of the green economy with links to science, high technology and innovator businesses seeking location with strong environmental credentials.</p> <p>The site will be supported by enhanced connectivity and transport infrastructure.</p>	<p>Leeds City Council</p> <p>Environment Agency</p> <p>Yorkshire Water</p> <p>West Yorkshire Combined Authority</p>	<p>Esholt Hybrid Planning Application (Pending)</p> <p>Local Plan</p>	<p>Requires cross agency project team with defined work programme to fully detail key issues.</p> <p>Masterplan supported with phasing and implementation strategy required.</p>	<p>Authority Monitoring Report</p>	<p>Initial work to progress on co-ordinating programme and detailed project plan</p>	<p>Homes, Jobs and infrastructure needed.</p>
1C	Northern Powerhouse Rail	<p>Development of Northern Powerhouse Rail network to support better connectivity between northern cities. This would a network of new and significantly upgraded lines across the north.</p> <p>This includes the provision of a new line between Leeds and Manchester via Bradford with a station in Bradford.</p>	<p>Leeds City Region Authorities</p> <p>West Yorkshire Combined Authority</p> <p>Leeds City Region Local Enterprise Partnership</p> <p>Transport for the North</p> <p>Department for Transport</p> <p>Network Rail</p>	<p>Transport for the North Strategic Transport Strategy</p> <p>West Yorkshire Connectivity Infrastructure Plan 2040 (Draft)</p> <p>West Yorkshire Rail Strategy (2021)</p>	<p>On-going discussions/lobbying with central government and Transport for the North.</p> <p>Participation in relevant working groups.</p> <p>Northern leaders (through TfN) have agreed an initial preferred way forward for NPR, including a proposed network. This has been submitted to Government.</p>	<p>Monitoring and updating of the Local Infrastructure Plan</p>	<p>On-going engagement and lobbying with Leeds City Region partners, Transport for North and Department for Transport (and other Government departments)</p>	<p>Provision of infrastructure</p>
1D	HS2 Connectivity	<p>Development the Leeds City Region HS2 Transformational City Region Priority Corridors:</p> <ul style="list-style-type: none"> Leeds – Bradford – Halifax and the Calder Valley 	<p>Leeds City Region authorities</p> <p>West Yorkshire Combined Authority</p> <p>Leeds City Region Local Enterprise Partnership</p>	<p>Leeds City Region HS2 Growth Strategy</p> <p>Leeds City Region HS2 Connectivity Strategy</p> <p>Leeds City Region HS2 Supply Chain & Skills Strategy</p>	<p>Alignment of investment priorities with the Bradford Local Plan</p>	<p>Delivery Plans</p> <p>Authority Monitoring Report</p>	<p>On-going engagement with Leeds City Region partners</p>	<p>Provision of infrastructure</p>

	Strategic Issue	Potential Impact	Areas/Bodies Affected	Potential Evidence	Proposed Resolution	Proposed Monitoring	Proposed Actions/Response	NPPF Link
		Delivery of Priority Gateways: <ul style="list-style-type: none"> • Bradford Interchange • Bradford Forster Square Delivery of Transformational Local Priority Corridors: <ul style="list-style-type: none"> • Leeds Bradford cross city connectivity • Bradford City – North Bradford towards Shipley, Saltaire and Airport • Bradford City Centre – South Bradford and North Kirklees 	Transport for the North HS2 Ltd Network Rail Train Operating Companies	West Yorkshire Connectivity Infrastructure Plan 2040 (Draft) Local Infrastructure Plan (Emerging)				
1E	West Yorkshire Mass Transit Network	Delivery of a city region transit network by 2033 through integrating bus, rail and mass rapid transit.	Leeds City Region Authorities West Yorkshire Combined Authority Leeds City Region Local Enterprise Partnership	Leeds City Region Connectivity Strategy West Yorkshire Mass Transit Vision 2040 (Draft) West Yorkshire Connectivity Infrastructure Plan 2040 (Draft)	On-going discussions with Leeds City Region authorities and West Yorkshire Combined Authority. Various working/interesting groups	Delivery Plans	On-going engagement with Leeds City Region partners	Provision of infrastructure
1F	Air Quality/Clean Air Zone	Implementation of the West Yorkshire Low Emissions Strategy as well as Bradford Low Emission Strategy and Bradford Air Quality Strategy. Growth will potentially impact on air quality	Leeds City Region Authorities West Yorkshire Combined Authority Public Health England	UK Air Quality Plan UK Clean Air Zone Framework West Yorkshire Low Emissions Strategy (2016 to 2021) Number of Air Quality Management Zones in Bradford due to traffic pollution Bradford Low Emission Strategy (2013) Bradford Air Quality Strategy (2011)	Implementation of the Clean Air Plan Implementation of a Clean Air Zone in Bradford district. Air Quality Assessment to be included as part of supporting documentation for major planning applications within the Clean Air Zone. Preparation of a Clean Air Zone SPD	Authority Monitoring Report Air quality monitoring data	Working with partners and stakeholders to implement the Clean Air Plan. Guiding development to most accessible and sustainable locations	Climate change mitigation and adaptation
1G	Airedale Growth Corridor	York, North Yorkshire & East Riding have created a Strategic Framework to help shape long term growth across the LEP area. It looks beyond existing Local Plan horizons towards 2050. The Airedale Growth Corridor is one of six identified as strategic development zones. It is broadly defined as the corridor from East Lancashire, through Craven into Bradford District.	Craven; Lancashire; North Yorkshire; Pendle Transport for the North	York, North Yorkshire & East Riding Spatial Plan (2015) York, North Yorkshire & East Riding Strategic Framework	On-going liaison with neighbouring authorities	Future local plans within the Airedale Growth Corridors	On-going liaison with neighbouring authorities	Homes and Jobs needed and provision of infrastructure
1H	Green Belt – Function & Extent	Long term strategic function of the Green Belt. Potential for limited Green Belt release to accommodate proposed housing and employment growth within	Calderdale; Craven; Harrogate; Kirklees; Leeds; North Yorkshire	Green Belt Review	On-going discussions with Leeds City Region authorities.	Authority Monitoring Report	On-going liaison with neighbouring authorities on current or emerging Local Plans and their implications for the scale and extent of the Green Belt in the Leeds City Region.	Homes and Jobs needed and provision of infrastructure

	Strategic Issue	Potential Impact	Areas/Bodies Affected	Potential Evidence	Proposed Resolution	Proposed Monitoring	Proposed Actions/Response	NPPF Link
		<p>Bradford District (see sections 2A; 2C; 3A to 3C)</p> <p>The existing Green Belt covers a total of 23,886ha (65.2% of the district's total area).</p> <p>The Local Plan proposes a total of 321ha for development (252ha for housing and 69ha for employment). This is 1.35% of all proposed development.</p> <p>It would result in a Green Belt area of 23,654ha (64.32% of the district's total area), a change of 322ha or 0.88%</p>						
2	Housing							
2A	Scale and location of new land for homes – Infrastructure	<p>Impact on infrastructure (including transport, education and social) may occur outside the District boundaries, where development takes in settlements close to the boundary.</p> <p>The Local Plan seeks to deliver a requirement of 30,672 dwellings between 2020 and 2038 (1,704 per year). These are proposed to be distributed as follows:</p> <ul style="list-style-type: none"> Regional City of Bradford: 20,075 <ul style="list-style-type: none"> <i>Bradford City Centre: 7,000</i> <i>Bradford North East: 1,850</i> <i>Bradford North West: 2,900</i> <i>Bradford South East: 2,220</i> <i>Bradford South West: 3,175</i> <i>Shipley & Canal Road Corridor: 1,750</i> <i>Shipley: 1,1200</i> Principal Towns: 3,350 <ul style="list-style-type: none"> <i>Bingley: 850</i> <i>Ilkley: 300</i> <i>Keighley: 2,200</i> Local Growth Centres: 2,875 	<p>Calderdale, Craven, Harrogate; Kirklees, Leeds, North Yorkshire (Education and Highways); Lancashire (Highways)</p> <p>Bradford & Craven Clinical Commissioning Group</p> <p>Network Rail</p> <p>West Yorkshire Combined Authority</p>	<p>Adjoining authorities' local infrastructure plans</p> <p>Bradford Local Infrastructure Plan (Emerging)</p> <p>Emerging transport modelling to support the Bradford Local Plan</p> <p>Local Plans of adjacent authorities</p> <p>Education planning</p> <p>Consultation responses received during Local Plan consultations</p> <p>Joint Strategy Needs Assessment</p> <p>Clinical Commissioning Group Plans</p>	<p>Sharing of evidence and information including updates to, and content of the Local Infrastructure Plan</p> <p>On-going discussion with neighbouring authorities, and infrastructure providers.</p> <p>Seek to ensure that sites are selected and phased in Local Plan to take account of infrastructure availability and requirements.</p>	<p>Local Plan choice of sites for development and supporting infrastructure where required.</p> <p>Monitoring of housing completions</p> <p>Monitoring and updating of the Local Infrastructure Plan</p>	<p>On-going liaison and sharing of evidence with neighbouring authorities and infrastructure providers.</p> <p>Joint working at the Leeds City Region level on the delivery of housing and infrastructure.</p> <p>Ensure that infrastructure requirements are identified in the Local Infrastructure Plan and included within the Local Plan.</p> <p>Reflect required infrastructure and mitigation measures in the Local Plan under specific sites.</p>	Housing need

	Strategic Issue	Potential Impact	Areas/Bodies Affected	Potential Evidence	Proposed Resolution	Proposed Monitoring	Proposed Actions/Response	NPPF Link
		<ul style="list-style-type: none"> • <i>Burley in Wharfedale: 625</i> • <i>Menston: 350</i> • <i>Queensbury: 450</i> • <i>Silsden: 700</i> • <i>Steeton with Eastburn: 175</i> • <i>Thornton: 575</i> • Local Service Centres: 1,375 <ul style="list-style-type: none"> • <i>Addingham: 175</i> • <i>Baildon: 250</i> • <i>Cottingley: 150</i> • <i>Cullingworth: 175</i> • <i>Denholme: 80</i> • <i>East Morton: 10</i> • <i>Harden: 60</i> • <i>Haworth: 250</i> • <i>Oakworth: 75</i> • <i>Oxenhope: 25</i> • <i>Wilsden: 125</i> <p>Limited Green Belt release proposed for:</p> <ul style="list-style-type: none"> • Addingham • Baildon • Bingley • Bradford North East • Bradford North West • Bradford South East • Bradford South West • Burley in Wharfedale • Cottingley • Cullingworth • East Morton • Harden • Ilkley • Keighley • Menston • Oakworth • Oxenhope • Queensbury 						

	Strategic Issue	Potential Impact	Areas/Bodies Affected	Potential Evidence	Proposed Resolution	Proposed Monitoring	Proposed Actions/Response	NPPF Link
		<ul style="list-style-type: none"> • Shipley • Steeton with Eastburn • Thornton • Wilsden 						
2B	Scale and location of new land for housing development – scale of provision and meeting the needs of other areas	<p>Requirements to discuss if adjacent authorities can assist in meeting the housing need of Bradford district and vice versa</p> <p>The Local Plan seeks to deliver a requirement of 30,672 dwellings between 2020 and 2038 (1,704 per year). These are proposed to be distributed as set out in 2A (above)</p>	Calderdale; Craven; Harrogate, Kirklees; Leeds; North Yorkshire; Pendle	<p>Strategic Housing Market Assessment</p> <p>Strategic Housing Land Availability Assessment</p> <p>Current and emerging Local Plans (Bradford and neighbouring authorities)</p>	At present, Bradford intends to meet its objectively assessed housing need (30,672 dwellings) (as set out in the Local Plan) within the district up to 2038.	<p>Authority Monitoring Report</p> <p>Local Plan allocations, phasing and delivery</p> <p>5 year supply and housing completions monitoring</p>	<p>Bradford Council will seek to co-ordinate on-going liaison with adjoining planning authorities via existing City Region working arrangements, as well as through bespoke Duty to Cooperate activities.</p> <p>Confirmation will be needed from adjoining planning authorities that they are seeking meet their own needs within their boundaries and not planning to meet any shortfall arising from neighbouring areas.</p>	Housing need
2C	Scale and location of new land for housing development - Green Belt	<p>Potential requirement for release of Green Belt land to ensure that Bradford's housing requirement can be met resulting in impacts on the function of the Green Belt.</p> <p>Limited Green Belt release proposed for:</p> <ul style="list-style-type: none"> • Addingham • Baildon • Bingley • Bradford North East • Bradford North West • Bradford South East • Bradford South West • Burley in Wharfedale • Cottingley • Cullingworth • East Morton • Harden • Ilkley • Keighley • Menston • Oakworth • Oxenhope • Queensbury • Shipley • Steeton with Eastburn 	Calderdale; Craven; Harrogate; Kirklees; Leeds; North Yorkshire	<p>Strategic Housing Market Assessment</p> <p>Strategic Housing Land Availability Assessment</p> <p>Green Belt Review</p>	At present, Bradford intends to meet its objectively assessed housing need (30,672 dwellings) (as set out in the Local Plan) within the district up to 2038.	<p>Authority Monitoring Report</p> <p>Local Plan setting out revised Green Belt boundaries</p>	<p>Engagement/discussions with neighbouring authorities in undertaking the Green Belt Review and in preparation of the Local Plan. This includes sharing draft Green Belt Study work,</p>	Housing need

	Strategic Issue	Potential Impact	Areas/Bodies Affected	Potential Evidence	Proposed Resolution	Proposed Monitoring	Proposed Actions/Response	NPPF Link
		<ul style="list-style-type: none"> • Thornton • Wilsden 						
2D	Scale and location of sites for accommodation for Gypsies & Travellers and Travelling Show People	<p>Provision of accommodation for Gypsies & Travellers and Travelling Show People as lack of provision may result in unauthorised encampments in Bradford and surrounding authorities, including on Green Belt land.</p> <p>During the Local Plan period, provision will be made for a minimum total need of 26 pitches, whilst specific sites for minimum of 15 pitches will be identified to meet a 5 year Authorised Pitch Shortfall. No pitches are required for Travelling Showpeople. There also no requirement for transit pitches with a recommendation for a negotiated stopping policy.</p>	Calderdale; Craven; Harrogate; Kirklees; Leeds; North Yorkshire	<p>Gypsy & Traveller Accommodation Assessment (GTAA) (2021)</p> <p>Strategic Housing Market Assessment</p>	<p>Update existing needs information and share findings with partners.</p> <p>Identify and provide the required number of pitches for permanent and transit sites identified in the GTAA/ SHMA</p>	<p>Authority Monitoring Report</p> <p>Five Year Rolling Supply</p> <p>Local Plan policy to set out overall approach and requirements</p> <p>Local Plan setting out revised Green Belt boundaries and allocating sites for Gypsy & Traveller and Travelling Showpeople's accommodation</p>	<p>Engagement with Leeds GATE and Gypsy and Traveller, and Travelling Showpeople's communities</p> <p>Provide for the need identified in the GTAA and emerging SHMA</p> <p>Undertake call for sites exercise as part of consultation on the Regulation 18 (Preferred Options) version of the Local Plan.</p>	Housing need
3	Economy/Employment							
3A	Scale and location of new land for employment development	<p>Potential to prejudice prospects for regeneration in neighbouring areas by diverting investment interest and infrastructure funding.</p> <p>The Local Plan seeks to support existing Enterprise Zones (EZs) at Staithgate Lane, Parry Lane and Gain Lane as well as the regeneration of existing Business Development Zones (BDZ) at:</p> <ul style="list-style-type: none"> • Bowling Back Lane (Bradford) • Saltaire to Dockfield Road (Shipley) • Dalton Lane (Keighley) • Royd Ings (Keighley) <p>In addition, it seeks to maintain and support a number long established Employment Zones in the Regional City of Bradford and Airedale.</p> <p>The Plan supports the delivery of at least 1,600 jobs per annum up to 2038.</p> <p>The Local Plan identifies an employment land requirement of</p>	<p>Calderdale; Leeds; Kirklees; Craven; Harrogate; North Yorkshire</p> <p>Leeds City Region Local Enterprise Partnership</p>	<p>Employment Land Study (2019) & Addendum (2021)</p> <p>Regional Econometric Model Retail & Leisure Study (2019)</p> <p>Leeds City Region Strategic Economic Plan</p> <p>Bradford Economic Strategy</p>	<p>Share evidence regarding future economic development and employment land requirements</p>	<p>Authority Monitoring Report</p> <p>Employment land monitoring including monitoring of land uptake, employment permissions and completions.</p> <p>Annual job growth</p> <p>Local Plan</p>	<p>On-going liaison and sharing of evidence with neighbouring authorities.</p> <p>Joint working at the Leeds City Region level on the delivery of employment land and infrastructure.</p>	Employment and infrastructure needed

	Strategic Issue	Potential Impact	Areas/Bodies Affected	Potential Evidence	Proposed Resolution	Proposed Monitoring	Proposed Actions/Response	NPPF Link
		<p>72ha, with the following distribution:</p> <ul style="list-style-type: none"> Bradford North East: 9.85ha (1 site) Bradford South East: 28.09ha (12 sites) Bradford South West: 3.77ha (2 sites) Holme Wood (North of Westgate Hill/West of Tong Lane): 9.06ha (1 site) Esholt/Apperley Bridge Strategic Employment Area: 31.55ha (2 sites) Airedale: 8.47ha (4 sites) <p>The Holme Wood (North of Westgate Hill/West of Tong Lane) and Esholt/Apperley Bridge sites are within the Green Belt.</p>						
3B	Scale and location of new land for employment – infrastructure	<p>Potential to prejudice prospects for regeneration in neighbouring areas by diverting investment interest and infrastructure funding.</p> <p>The Local Plan seeks to support existing Enterprise Zones (EZs) at Staithgate Lane, Parry Lane and Gain Lane as well as the regeneration of existing Business Development Zones (BDZ) at:</p> <ul style="list-style-type: none"> Bowling Back Lane (Bradford) Saltaire to Dockfield Road (Shipley) Dalton Lane (Keighley) Royd Ings (Keighley) <p>In addition, it seeks to maintain and support a number long established Employment Zones in the Regional City of Bradford and Airedale.</p> <p>The Plan supports the delivery of at least 1,600 jobs per annum up to 2038.</p> <p>The Local Plan identifies an employment land requirement of 72ha, with the following distribution:</p>	<p>Calderdale; Leeds; Kirklees; Craven; Harrogate; North Yorkshire</p> <p>Leeds City Region Local Enterprise Partnership</p> <p>West Yorkshire Combined Authority</p> <p>Highways England</p>	<p>Employment Land Study (2019) & Addendum (2021)</p> <p>Local Infrastructure Plan</p> <p>Emerging transport modelling to the support the Local Plan</p> <p>Leeds City Region Strategic Economic Plan</p> <p>Bradford Economic Strategy</p>	<p>Share evidence regarding future economic development and employment land requirements, as well as updates to and content of the Local Infrastructure Plan.</p>	<p>Annual monitoring of employment permissions and completions</p> <p>Commuting patterns and traffic flows</p> <p>Annual job growth</p> <p>Monitoring. Review and update of Local Infrastructure Plan</p>	<p>On-going liaison and sharing of evidence with neighbouring authorities and infrastructure providers.</p> <p>Joint working at the Leeds City Region level on the delivery of employment land and infrastructure.</p> <p>Ensure that infrastructure requirements are identified in the Local Infrastructure Plan and included within the Local Plan.</p> <p>Reflect required infrastructure and mitigation measures in the Local Plan under specific sites/locations.</p>	<p>Employment and infrastructure needed</p>

	Strategic Issue	Potential Impact	Areas/Bodies Affected	Potential Evidence	Proposed Resolution	Proposed Monitoring	Proposed Actions/Response	NPPF Link
		<ul style="list-style-type: none"> Bradford North East: 9.85ha (1 site) Bradford South East: 28.09ha (12 sites) Bradford South West: 3.77ha (2 sites) Holme Wood (North of Westgate Hill/West of Tong Lane): 9.06ha (1 site) Esholt/Apperley Bridge Strategic Employment Area: 31.55ha (2 sites) Airedale: 8.47ha (4 sites) <p>The Holme Wood (North of Westgate Hill/West of Tong Lane) and Esholt/Apperley Bridge sites are within the Green Belt.</p>						
3C	Scale and location of new land for employment - Green Belt	<p>Impact on the extent of Green Belt in Bradford District</p> <p>The Local Plan proposes to include two areas of Green Belt land for employment use at Holme Wood (North of Westgate Hill/West of Tong Lane) (1 site – 9.06ha) and Esholt/Apperley Bridge Strategic Employment Area (2 sites – 31.55ha). Part of this area is previously developed land.</p>	<p>Calderdale, Leeds, Kirklees, Craven, Harrogate</p> <p>Highways England</p>	<p>Employment Land Study (2019) & Addendum (2021)</p> <p>Leeds City Region Strategic Economic Plan</p> <p>Bradford Green Belt assessment</p>	<p>Share evidence regarding future economic development and employment land requirements, as well as work on Green Belt study.</p>	<p>Authority Monitoring Report</p> <p>Local Plan setting out revised Green Belt boundaries</p>	<p>Engagement and discussions with neighbouring authorities in undertaking the Green Belt Review and in preparation of the Local Plan. This includes sharing draft Green Belt Study work,</p>	<p>Employment needed</p>
3D	Land south of NuFarm, Wyke	<p>Green Belt land is being promoted through a masterplan south of the Nufarm chemical works for a range of employment uses (primarily B2 and B8) due to its proximity to the motorway network and to facilitate a new main access point to the current Nufarm chemical works. The site overall is positioned within the HSE Inner and Middle Zones associated with the chemical works. The HSE has recently indicated that it would not advise against the layouts recently presented which generally indicate a siting of units moved outwards towards the middle zone. The proposal still represents linear large scale 'big box' ribbon development within</p>	<p>Kirklees</p> <p>Calderdale</p> <p>Highways England</p> <p>West Yorkshire Combined Authority</p>	<p>Local Plan</p>	<p>The site has not been identified as a preferred option for employment allocation (Regulation 18) within the Bradford District Local Plan, but the plan is at an early stage of development and subject to representations. Further work is required with neighbouring authorities in relation to the impact of the proposal in its various forms as part of the plan-making process.</p>	<p>Local Plan process</p>	<p>Requires cross organisation discussions and coordinated response to issues arising.</p>	<p>Employment and infrastructure needed</p>

	Strategic Issue	Potential Impact	Areas/Bodies Affected	Potential Evidence	Proposed Resolution	Proposed Monitoring	Proposed Actions/Response	NPPF Link
		the Green Belt and in an open landscape setting. Two new access points are being proposed to the development from within Kirkless District and the proposed development would have immediate impact on the local highway network. A limited scale of development is also promoted within Kirkless District along the A58 road frontage.						
3E	Retail & Leisure	Developments elsewhere could impact on Bradford's ability to attract and retain floorspace and reduce leakage. Changes in town centre and retail sectors due to changing shopping patterns following the growth of on-line retail and COVID-19.	Calderdale, Kirklees, Leeds	Retail & Leisure Study (2019)		Authority Monitoring Report Retail and Leisure Study	Regular updates to the Bradford Retail and Leisure Study (bi-annually).	Retail and leisure provision
4	Flood Risk							
4A	Flood risk in main river corridors (primarily the Rivers Aire, Wharfe and Worth)	Development increases flood risk in other areas upstream and downstream. In identifying land for development, need to avoid increasing flood risk further downstream and to assess feasibility of safeguarding areas to increase flood storage provision and improve defences.	Craven, Harrogate, Leeds, North Yorkshire, Selby, Yorkshire Dales National Park Environment Agency Drainage Boards	Strategic Flood Risk Assessment (2019) and subsequent updates Local Infrastructure Plan	River Catchment plans Links with local infrastructure plans and provision of blue/green infrastructure. Local Plan site allocations choices. Use of Sustainable Urban Drainage Systems (SUDS) and work of SUDS approval body when in place	SUDS approval body implementation Authority Monitoring Report Monitoring. Review and update of Local Infrastructure Plan	SFRA Level 1 agreed with Environment Agency in May 2019 and supporting statement linked to development strategy. Undertake update to SFRA to take into account updated river models.	The provision of infrastructure for flood risk
4B	Surface Water Flood Risk and Brownfield Regeneration	Identification of a range of brownfield urban regeneration priority sites which may be at risk of surface water flooding	Water infrastructure providers Local Lead Flood Authority Environment Agency	Strategic Flood Risk Assessment Local Infrastructure Plan Surface Water Management Plan Local Flood Risk Management Strategy	Analysis of culverted water streams, surface water management plans and infrastructure investment. Also links to SUDS and Green Infrastructure	Authority Monitoring Report Local Plan Monitoring. Review and update of Local Infrastructure Plan	On-going liaison with water infrastructure providers and other stakeholders.	The provision of infrastructure for flood risk
5	Green Infrastructure							
5A	Green infrastructure (including biodiversity net-gain)	Agreement on importance of GI in managing and mitigating impacts of growth and on strategic corridors and assets, including biodiversity networks.	Leeds City Region Authorities North Yorkshire Yorkshire Dales NPA Local Nature Partnerships Natural England	Leeds City Region Green Infrastructure Strategy Green Infrastructure Strategy (TBC) Open Space Assessment White Rose Forest	Seek to identify and establish green infrastructure networks and corridors within Bradford as well as across local authority boundaries	Authority Monitoring Report Monitoring of green infrastructure created and lost through development.	On-going liaison with adjoining authorities and key bodies e.g. LNPs, Natural England and Environment Agency in developing evidence base and policy approaches. Reflect strategic infrastructure links with neighbouring authorities in emerging plans.	Climate Change Conservation and Enhancement of the natural environment

	Strategic Issue	Potential Impact	Areas/Bodies Affected	Potential Evidence	Proposed Resolution	Proposed Monitoring	Proposed Actions/Response	NPPF Link
5B	Open Space	Usage of open space in other local authority areas by Bradford residents and vice versa. Issue for open space provision	Calderdale, Craven, Harrogate, Kirklees, Leeds, Pendle	Open Space Assessment	Seek to identify a network of open spaces in Bradford district.	Authority Monitoring Report Monitoring of green infrastructure created and lost through development.		Conservation and Enhancement of the natural environment Provision of Infrastructure
6	Biodiversity							
6A	Biodiversity/impact on South Pennine Moors SPA/SAC from growth in districts and “in combination” impacts.	The South Pennine Moors SPA/SAC cover a number of local authority areas. There is a duty to ensure its conservation and management. Need to consider the potential impacts of growth form individual districts and “in combination” effects on the SPA/SAC. Would also need to consider impacts to North Pennines area.	Calderdale; Craven; Harrogate; Kirklees; Pendle Natural England South Pennines Local Nature Partnership	Natural England condition survey Habitat Regulations Assessment (HRA) for Bradford Local Plan. Visitor Survey Foraging Birds Surveys	Need for sensitive choice of sites for development in order to reduce potential impacts. May requires additional Habitats Regulations Assessment (HRA) work in respect of individual sites. Managing and monitoring access to the moors. Need to consider potential for identifying additional areas of habitat and/ or locations for recreation and funding mechanisms to support this. Buffer policy around SPA linked to criteria policy in Local Plan Provision of the additional planning policy in the form of a South Pennines Supplementary Planning Document (SPD) and Mitigation Strategy	Bird Survey Visitor Survey – will gain an understanding of pressures for recreational use of upland areas	On-going engagement with South Pennine Moors authorities included attendance at quarterly meeting (Kirklees Council acts as the lead authority) Sharing Habitat Regulations Assessment (HRA) work with neighbouring planning authorities and key bodies e.g. Natural England and LNP. Engagement with Natural England and LNP on HRA and SPD work. Development of South Pennine Moors SPD & Mitigation Strategy	Conservation and Enhancement of the natural environment
7	Environment							
7A	Landscape	Visibility of developments across the South Pennines landscape	Calderdale; Craven; Harrogate; Kirklees; North Yorkshire; Pendle; Yorkshire Dales NP	Landscape Character Assessment	Need for sensitive choice of sites for development in order to reduce potential impacts.		On-going liaison/discussion with neighbouring authorities as part of the process of identifying Local Plan site allocations	Conservation and Enhancement of the natural environment
7B	Renewable and Low Carbon Energy	Possible identification of areas of search for wind energy developments. Landscape impacts with neighbouring authorities Cumulative visual impact - Need to be able to assess cumulative visual impact plus potential impacts on protected bird species and to weigh these against case for renewable energy	Calderdale, Kirklees, Craven, Burnley, Bury, Lancashire, Rochdale; Pendle Areas just outside the South Pennine Moors SAC and SPA, where wind speeds are still relatively high tend to come under greatest pressure.	Currently no available evidence relating to areas suitable for wind turbines/renewable energy capacity. Also limited evidence on landscape character and impact.	A South Pennine Memorandum of Understanding on Renewable Technologies has been developed by the authorities that form part of the South Pennine Renewable Energy Working Group	Memorandum established joint working in relation to setting up and sharing monitoring systems. Work has started on this. Authority Monitoring Report.	South Pennine Renewable Energy Working Group on-going liaison and sharing of information. Undertake further technical work to inform future iterations of the Local Plan to develop an area strategy and approach to renewable and low carbon energy, as well as setting standards for energy and viability. Undertake Call for Site exercise to identify potential sites/locations for renewable and low carbon energy development.	Climate Change Conservation and enhancement of the natural environment

	Strategic Issue	Potential Impact	Areas/Bodies Affected	Potential Evidence	Proposed Resolution	Proposed Monitoring	Proposed Actions/Response	NPPF Link
							Develop guidance to support planning applications.	
7C	Water Quality	Development may have potential to impact on water quality in waterbodies within and adjacent to the district, in particular downstream areas. Non-compliance with Water Framework Directive	Leeds City Region authorities (Calderdale; Craven; Harrogate; Kirklees; Leeds; North Yorkshire; Yorkshire Dales National Park) Environment Agency	Water Framework Directive Humber River Basin Management Plan	On-going engagement/liasion with neighbouring authorities and Environment Agency	Authority Monitoring Report	On-going engagement/liasion with neighbouring authorities and Environment Agency.	Climate change mitigation and adaptation, conservation and enhancement of the natural and historic environment, including landscape.
8 Transport Infrastructure								
8A	Strategic & Local Highway Network	Potential for disruption of traffic flows and capacity issues on the Strategic (M62/M621/M606) and Local Highway Networks. Delivery of junction capacity improvements, road widening and realignments, and new infrastructure where these lead to efficiency, user and air quality benefits for the Bradford and PRN/KRN networks and routes: <ul style="list-style-type: none"> • A650 Tong Street; • A650 Wakefield Road; • A641 Bradford to Huddersfield Corridor • Bradford to Shipley Route Improvement Scheme; and • M606 Junction 2 • South East Bradford Access Road (SEBAR) Connectivity between East Lancashire, North Yorkshire and Bradford.	Highways England Department for Transport Transport for the North West Yorkshire Combined Authority Leeds; North Yorkshire; Craven; Lancashire; Pendle; Kirklees; Calderdale	Adjoining authorities' local infrastructure plans Bradford Local Infrastructure Plan (Emerging) Emerging transport modelling to support the Bradford Local Plan Local Plans of adjacent authorities West Yorkshire Transport Strategy 2040 DfT/Highways England Roads Investment Strategy 2 Strategic Transport Model (Ongoing) Other local authorities' transport models	Seek to reflect the views of Highways England and neighbouring highway authorities in the Local Plan West Yorkshire Transport Fund Plus investment including delivery of schemes in Bradford District Wider project and stakeholder working party for SEBAR.	Authority Monitoring Report Local Plan	On-going engagement with Highways England and neighbouring authorities as details emerge of the future development strategy and site allocations to determine impact of growth of the strategic and local highway networks. Ensure that highway requirements are identified in the Local Infrastructure Plan and included within the Local Plan Include mitigation measures required by Highways England as well as those to support development on the local highway network are reflected in the Local Plan under specific sites. Impacts of the proposed Local Plan site allocations to be tested through the Strategic Highway Model.	Infrastructure for transport
8B	Rail infrastructure	Potential for planned development to cause capacity issues and congestion at stations in Bradford District. Delivery of Gateway stations schemes for Bradford Forster Square and Bradford Interchange, as well as improvements to Frizinghall Station.	Office of Rail & Road West Yorkshire Combined Authority Transport for the North Network Rail Leeds City Region Authorities Lancashire County Council	Local Infrastructure Plan West Yorkshire Transport Strategy 2040 Transport for the North Strategic Transport Plan West Yorkshire Mass Transit Vision 2040 (Draft) West Yorkshire Connectivity Infrastructure Plan 2040 (Draft)	West Yorkshire Transport Fund Plus investment including delivery schemes of in Bradford District	Authority Monitoring Report	On-going engagement with neighbouring authorities, WYCA, and rail providers/agencies in the development of evidence base (Local Infrastructure Plan) and policy formulation. Identify specific rail-related projects in the Local Infrastructure Plan	Infrastructure for transport

	Strategic Issue	Potential Impact	Areas/Bodies Affected	Potential Evidence	Proposed Resolution	Proposed Monitoring	Proposed Actions/Response	NPPF Link
		<p>Delivery of rail park and ride/car parking schemes at various railway stations within the district:</p> <ul style="list-style-type: none"> • Apperley Bridge; • Low Moor; • Shipley; and • Steeton & Silsden; <p>Improvements to infrastructure and services on the Calder Valley, Airedale & Wharfedale lines.</p> <p>Delivery of Northern Powerhouse Rail (NPR) including station in Bradford City Centre</p> <p>Reopening of railway line between Skipton (North Yorkshire) and Colne (Lancashire)</p>						
8C	Public Transport	<p>Potential for planned development to require the provision of additional public transport services/routes</p> <p>Improved public transport access between Bradford and Leeds via Leeds/Bradford Corridor</p> <p>Development of a mass transit system for the Leeds City Region linked to the development of HS2 and NPR. Includes the delivery of designated routes between:</p> <ul style="list-style-type: none"> • Bradford and Leeds, • Bradford and North Kirklees, • Bradford and Halifax, • Bradford and Guiseley/Yeadon/Leeds Bradford Airport, <p>Delivery of new/expanded Park & Ride sites in appropriate locations including the provision of the South Bradford Park & Ride site.</p> <p>Delivery of public transport priority lanes including bus priority corridors that integrate with cycle improvements, e.g. to Manchester Road, Bradford.</p>	<p>Calderdale, Craven, Kirklees, Leeds</p> <p>West Yorkshire Combined Authority</p> <p>Bus Operators</p>	<p>Local Infrastructure Plan</p> <p>Leeds City Region Connectivity Strategy</p> <p>West Yorkshire Transport Strategy 2040</p> <p>West Yorkshire Mass Transit Vision 2040 (Draft)</p> <p>West Yorkshire Connectivity Infrastructure Plan 2040 (Draft)</p>	<p>West Yorkshire Transport Fund Plus investment including delivery schemes of in Bradford District</p> <p>Transforming Cities Fund</p>	<p>Authority Monitoring Report.</p> <p>On-going monitoring and regular review of the Local Infrastructure Plan to reflect updated position</p>	<p>On-going engagement with neighbouring authorities, WYCA, and public transport providers/agencies in the development of evidence base (Local Infrastructure Plan) and policy formulation.</p> <p>Ensure public transport mitigation measures required to support development are reflected in the Local Plan under specific sites.</p>	Infrastructure for transport

	Strategic Issue	Potential Impact	Areas/Bodies Affected	Potential Evidence	Proposed Resolution	Proposed Monitoring	Proposed Actions/Response	NPPF Link
8D	Walking & Cycling	Increasing opportunities for cycling and walking within the District. Expanding and improving the network of segregate urban routes and off-road inter-urban and -town cycle routes, including a network of multi-user greenways, trails and routes including on canal towpaths or former railway alignments. These include the Airedale Greenway, Wharfedale Greenway, Canal Road Greenway; and Green Northern Trail as well as cycleway infrastructure relating to Queensbury Tunnel and the National Cycle Network.	Leeds City Region authorities West Yorkshire Combined Authority Sustrans Highways England Canal & River Trust	Local Infrastructure Plan Bradford District Cycling Strategy West Yorkshire Transport Strategy 2040 City Connect 3 (Bradford-Halifax Greenway) Bradford Local Cycling and Walking Investment Plan (LCWIP) West Yorkshire Connectivity Infrastructure Plan 2040 (Draft)		Authority Monitoring Report. On-going monitoring and regular review of the Local Infrastructure Plan to reflect updated position City Connect		Infrastructure for transport
9 Social Infrastructure								
9A	Education Provision	Potential impact on school places in neighbouring authorities, particularly where development is proposed near the district boundary.	Bradford Local Education Authority Adjoining Local Education Authorities (Calderdale, Kirklees, Leeds, North Yorkshire)	School planning evidence/School Organisation Plans Local Infrastructure Plan Responses received during consultation on emerging Local Plan documents	Sharing information regarding future development strategy and site allocations with Local Education Authorities (Bradford and neighbouring areas) order to permit them to assess potential impacts on their educational information. Planning for education provision	Authority Monitoring Report Local Plan On-going monitoring and regular review of the Local Infrastructure Plan to reflect updated position	On-going engagement with education providers as part of the preparation of the Local Plan and Local Infrastructure Plan. Identify key educational infrastructure requirements in Local Infrastructure Plan, and reflect providers concerns, where possible in selecting and phasing of allocations. This may include identifying specific mitigation measures in policies. Identify need to seek developer contributions (if appropriate).	Infrastructure provision
9B	Health Provision	Potential impact on health care facilities and services in neighbouring authorities, particularly where development is proposed near the district boundary. Housing growth has the potential to increase the need for further health facilities Need for new or enhanced medical facilities within the district/	Calderdale, Craven, Kirklees, Leeds, North Yorkshire Bradford District and Craven Clinical Commissioning Group NHS England Bradford Teaching Hospitals NHS Foundation Trust Airedale NHS Foundation Trust	Local Infrastructure Plan Clinical Commissioning Group Plans Joint Strategic Needs Assessment	Sharing information regarding future development strategy and site allocations with health care providers in order to permit them to assess potential impacts on their networks. Liaison with health providers in development of the evidence base, in particular the Local Infrastructure Plan.	Authority Monitoring Report Local Plan On-going monitoring and regular review of the Local Infrastructure Plan to reflect updated position	Engage with the Clinical Commissioning Groups, Public Health and relevant NHS Trusts as future development strategy and site allocations emerge to examine impacts on existing and future provision.	Provision of health care
9C	Public Health	Need to reflect the wider public health challenges facing Bradford district.	Bradford District and Craven Clinical Commissioning Group NHS England	Local Infrastructure Plan Bradford District Plan Clinical Commissioning Group Plans	Sharing information regarding future development strategy and site allocations with health care providers in order to permit them to assess potential impacts on their networks.	Authority Monitoring Report Local Plan On-going monitoring and regular review of the Local	Engage with Clinical Commissioning Groups, Public Health and relevant NHS Trusts as future development strategy and site allocations emerge to examine impacts on existing and future provision.	Provision of health care

	Strategic Issue	Potential Impact	Areas/Bodies Affected	Potential Evidence	Proposed Resolution	Proposed Monitoring	Proposed Actions/Response	NPPF Link
			Bradford Teaching Hospitals NHS Foundation Trust Airedale NHS Foundation Trust Bradford Council – Public Health Department	Joint Strategic Needs Assessment	Liaison with health providers in development of the evidence base, in particular the Local Infrastructure Plan. Seek to address wider public health issues through the design and layout of new development. Use Health Impact Assessment Development of policy to promote healthy communities	Infrastructure Plan to reflect updated position	Use Health Impact Assessment on the Local Plan and introduce it as a tool to assess development proposals. Development of policy to promote healthy communities	
10	Utilities							
10A	Pressure on services provided by utilities caused by growth	Future growth and land allocations may result in pressure being placed on utilities networks/infrastructure within Bradford district and in neighbouring areas	Yorkshire Water Northern Powergrid Northern Gas Networks National Grid Telecommunications Providers	Local Infrastructure Plan Utilities & Telecommunication Providers Asset Management, Business & Investment Plans	Sharing information regarding future development strategy and site allocations with utilities and telecommunications providers in order to permit them to assess potential impacts on their networks. Liaison with utilities and infrastructure providers in development of the evidence base, in particular the Local Infrastructure Plan Phasing of development to reflect providers' asset management plans.	Authority Monitoring Report Local Plan On-going monitoring and regular review of the Local Infrastructure Plan to reflect updated position.	On-going engagement with main utility companies as part of the preparation of the Local Plan and Local Infrastructure Plan. Identify key utilities requirements in Local Infrastructure Plan, and reflect providers concerns, where possible in selecting and phasing of allocations. This may include identifying specific mitigation measures in policies.	Provision of infrastructure for telecommunications, water supply, wastewater and energy (including heat)
11	Minerals & Waste							
11A	Minerals	Cross boundary movement of aggregates and stone and their importance for developments further afield Environmental effects of mineral workings close to the district boundary	Calderdale; Doncaster; East Riding of Yorkshire; Hull; Kirklees; Leeds; North Yorkshire; Yorkshire Dales National Park Derbyshire	Local Aggregate Assessment for West Yorkshire Yorkshire & Humber Aggregates Working Party – Annual Monitoring Report	Sub-regional liaison on minerals matters through Yorkshire and Humber Aggregates Working Party and Leeds City Region.	Sub-regional aggregates monitoring through Local Aggregate Assessment and Yorkshire and Humber Aggregates Working Party annual report,	Liaison through the regional minerals meetings (Yorkshire and Humber Aggregates Working Party) Site allocations to meet requirements for stone production – either new or existing sites in Local Plan. Inclusion of Mineral Safeguarding Areas and Areas of Search in the Local Plan	Provision of minerals
11B	Waste Management	Cross-boundary movements of waste (imports and exports) and the potential management, treatment or disposal in neighbouring local authority areas and further afield.	Environment Agency Adjoining waste planning authorities Authorities receiving waste imported from Bradford and exported to Bradford	Bradford Local Plan - Waste Management DPD (Adopted 2017) Leeds City Region Waste Needs Assessment Capacity (2017)/Waste Arisings & Waste Treatment Capacity Update Assessment Environment Agency – Waste Data Interrogator/Hazardous Waste Data Interrogator	Monitor and gain agreement on cross boundary waste movements to/from Bradford and other waste planning authorities	Authority Monitoring Report Liaison with sub-regional/regional waste planning authorities	On-going liaison with regional/sub-regional waste groups and other authorities that export waste to or receive waste from Bradford district.	Provision of infrastructure for waste management

Appendix 2: Leeds City Region Statement of Common Ground

See end of document

Appendix 3: Status of Neighbouring Authorities Local Plans

Authority	Plan/Document Title	Status
Calderdale Council	Calderdale Local Plan (2017 to 2032)	Examination: 26.06.2019 to 05.07.2019 (Stage 1); 06.10.2020 to 04.12.2020 (Stage 2)
Craven District Council	Craven Local Plan (2012 to 2032)	Adopted: 12.11.2019
Harrogate District Council	Harrogate District Local Plan (2014 to 2035)	Adopted: 04.03.2020 (initially)/09.12.2020 (final) ¹¹
Kirklees Council	Kirklees Local Plan (Strategy & Policies; Allocations & Designations) (2013 to 2031)	Adopted: Strategy & Policies: 27.02.2019; Allocations & Designations: 27.02.2019
Lancashire County Council ¹²	Lancashire Minerals & Waste Local Plan (Core Strategy DPD; Site Allocations & Development Control Policies) Lancashire Minerals & Waste Local Plan - Review	Adopted: Core Strategy DPD: March 2009; Site Allocations & Development Control Policies: 26.09.2013 Review: Draft Revised Minerals & Waste Local Plan; 28.09.2018 to 28.11.2018
Leeds City Council	Leeds Local Plan (Core Strategy DPD; Natural Resources & Waste DPD; Aire Valley Area Action Plan) Leeds Local Plan (Core Strategy DPD – Selective Review; Site Allocations Plan)	Adopted: Core Strategy DPD: November 2014; Natural Resources & Waste DPD: January 2013; Aire Valley Area Action Plan: November 2017 Adopted: Core Strategy (as amended by selected review): September 2019; Site Allocations Plan: 10.07.2019 ¹³
North Yorkshire County Council ¹⁴	Minerals & Waste Joint Plan	Examination: 27.02.2018 to 23.03.2018 and 24.01.2019 & 25.01.2019

¹¹ The adoption of the Local Plan was subject to a legal challenge against the new settlement policies. The plan was remitted to council was finally adopted in December 2020.

¹² Prepared jointly by Lancashire County Council, Blackpool Council and Blackburn with Darwen Council

¹³ The adoption of the Leeds Sites & Allocations Plan was subject to a legal challenge. This meant that all housing sites (including mixed use sites) that, immediately before the adoption of SAP were in green belt, will be remitted back to the Secretary of State and Planning Inspectorate for further examination. This means these sites are not considered adopted until re-examined. The rest of the SAP is adopted.

¹⁴ Prepared jointly by North Yorkshire County Council, City of York Council and North Yorkshire Moors National Park Authority

Authority	Plan/Document Title	Status
Pendle District Council	Pendle Local Plan (Part 1: Core Strategy DPD; Part 2: Site Allocations & Development Policies DPD; Bradley Area Action Plan)	<p>Adopted: Part 1: Core Strategy DPD: 17.12.2015; Bradley Area Action Plan: 30.06.2011</p> <p>Scoping Report & Methodology: Part 2: Site Allocations & Development Policies DPD: 24.02.2017 to 07.04.2017 (Consultation)</p>
Yorkshire Dales National Park Authority	<p>Yorkshire Dales National Park Local Plan (2015 to 2030)¹⁵</p> <p>Yorkshire Dales National Park Local Plan (2023 to 2040)¹⁶</p>	<p>Adopted: 20.12.2016</p> <p>Options Stages:</p> <ul style="list-style-type: none"> • Consultation 1: Setting the agenda: December 2019 to February 2020 • Consultation 2: Exploring our options: August to September 2020 • Consultation 3: Exploring our options: Building new homes: January to February 2021.

¹⁵ This plan covers the pre-extension area of the National Park. It does not cover the parts of Eden District, South Lakeland or Lancaster City that were designated as part of the extended National Park. Existing planning policy for three authorities will continue to be used in the areas covered by the extension until replaced by the new Local Plan.

¹⁶ Will cover the extended National Park area.

Appendix 4: Duty to Cooperate Activities

The table below sets out details of the Duty to Cooperate activities undertaken to date as part of developing the Bradford Local Plan, Details will be kept up to date as work on the Plan progresses.

Activity & Participants	Date	Purpose	Outcomes/Actions
<p>Activity: Biodiversity Partnership meeting</p> <p>Participants: Natural England, Environment Agency, West Yorkshire Ecology Service</p>	10/01/2019	To bring together relevant organisations with a biodiversity interest. Provided an update on England's biodiversity strategy and policies, identified geographical coverage of projects that are currently underway and where there are gaps. Looked at how the Biodiversity Action Plan for Bradford can be updated.	The partnership group helps to identify issues for biodiversity across the district and wider area.
<p>Activity: Core Strategy Partial Review – Scoping Consultation</p> <p>Participants: All Duty to Co-operate bodies, statutory consultees, local residents, local groups and organisation</p>	11/01/2019 to 22/02/2019	<p>The Core Strategy Partial Review forms the start of the work to update the adopted plan. The scoping stage consultation allows interested parties to participate in understanding the process and contributing comments, ideas and issues to the Council.</p> <p>This consultation fulfils the requirements of Regulation 18 of the Town and Country Planning (Local Development) Regulations 2012 (as amended).</p>	Consultation responses were received from Craven District Council, North Yorkshire County Council, Natural England, Environment Agency and Historic England. These identified a number of issues that will form the basis of on-going Duty to Co-operate discussion between CBMDC and these bodies.
<p>Activity: Strategic Housing Market Assessment (SHMA) - Stakeholder Event</p> <p>Participants: A wide range of stakeholders including elected members, town/parish councils, developers, agents, housing</p>	20.03.2019	This event focussed on the context and approach to the SHMA, methodology, emerging findings, key outputs and next steps and represented an opportunity for stakeholders to provide feedback and inform the findings of the study.	-

Activity & Participants	Date	Purpose	Outcomes/Actions
associations, council officers and statutory bodies. This included the following DTC bodies: <ul style="list-style-type: none"> • Kirklees Council; • Craven District Council • Highways England 			
<p>Activity: Biodiversity Partnership meeting</p> <p>Participants: Natural England, Environment Agency, West Yorkshire Ecology Service</p>	12/07/2019	To bring together relevant organisations with a biodiversity interest. Discussed issues relating to re-wilding, Biodiversity Action Plan, Core Strategy Partial Review biodiversity net-gain policy, species surveys.	The partnership group helps to identify issues for biodiversity across the district and wider area.
<p>Activity: Core Strategy Partial Review – Preferred Options Consultation</p> <p>Participants: All Duty to Co-operate bodies, statutory consultees, local residents, local groups and organisation</p>	30.07.2019 to 24.09.2019	<p>The Core Strategy Partial Review forms the start of the work to update the adopted plan. The Preferred Options consultation allows interested parties to participate in understanding the process and contributing comments, ideas and issues to the Council.</p> <p>This consultation fulfils the requirements of Regulation 18 of the Town and Country Planning (Local Development) Regulations 2012 (as amended).</p>	<p>Consultation responses were received from Environment Agency, Highways England, Historic England, Kirklees Council, Leeds City Council, Natural England, NHS Property Services; North Yorkshire County Council, Sport England, The Coal Authority and West Yorkshire Combined Authority</p> <p>These identified a number of issues that will form the basis of on-going Duty to Co-operate discussion between CBMDC and these bodies</p>
<p>Activity: South Pennine Moors Recreation Strategy Stakeholder Workshop</p> <p>Participants: Yorkshire Water, Friends of Ilkley Moor, Natural</p>	30/07/2019	To think about the recreation related issues for the South Pennine Moors, and discuss mitigation and management solutions that may work well at particular sites. Hosted by consultants Footprint Ecology.	The inputs will be used to help formulate the recreation management strategy for the SPD.

Activity & Participants	Date	Purpose	Outcomes/Actions
England, Bingley & Burley Moors Estate.			
<p>Activity: E-mail correspondence with neighbouring planning authorities seeking to engage in Duty to Co-operate process</p> <p>Participants: All Duty to Co-operate bodies including: Calderdale Council; Craven District Council; Harrogate Borough Council; Kirklees Council; Leeds City Council; North Yorkshire County Council; Wakefield Council; Lancashire County Council; Pendle Borough Council; Yorkshire Dales National Park Authority</p>	05.08.2019 & 06.08.2019	<p>Initial e-mail correspondence to neighbouring local planning authorities to establish contacts and arrange formal Duty to Co-operate discussions. Key areas for discussion with be:</p> <ul style="list-style-type: none"> • Plan-making progress • Identification of cross boundary planning issues • Identification of potential means of future co-operation in plan-making. • Determining need for any formal Statements of Common Ground. 	Meetings arranged/being arranged with neighbouring authorities and key bodies and/or agreement to enter correspondence (as appropriate).
<p>Activity: Duty to Co-operate Meeting: Historic England</p> <p>Participants: City of Bradford Metropolitan District Council; Historic England</p>	27.08.2019	Initial meeting with Historic England to discuss the Core Strategy Partial Review. Discussion took place regarding the implications of future development on the historic and built environment in Bradford District.	Agreed to examine for early engagement in the site allocation process regarding heritage impacts.
<p>Activity: Duty to Co-operate Meeting: Kirklees Council</p> <p>Participants: City of Bradford Metropolitan District Council; Kirklees Council</p>	13.09.2019	<p>Meeting to discuss emerging proposals within the Local Plan, as they could affect the areas adjacent to the boundaries of Bradford and Kirklees. Key issues discussed were:</p> <ul style="list-style-type: none"> • Growth and development in South Bradford • Spatial distribution of housing 	<p>It was identified that future housing growth to the South East of Bradford and the provision of the South East Bradford Access Road, together future growth in South Bradford with were key issues that need to be addressed as part of the Duty to Co-operate between Bradford and Kirklees.</p> <p>Further meetings under the Duty to Co-operate will take place as the Bradford Local Plan Allocations</p>

Activity & Participants	Date	Purpose	Outcomes/Actions
		<ul style="list-style-type: none"> • Distribution and location of employment land • Infrastructure (Transport; Education) 	<p>DPD emerges to allow further more detailed issues to be discussed.</p> <p>Kirklees Council will be providing a response to current consultation on Bradford Local Plan Core Strategy: Partial Review (Preferred Options).</p>
<p>Activity: Duty to Co-operate Meeting: Pendle Borough Council</p> <p>Participants: City of Bradford Metropolitan District Council; Pendle Borough Council</p>	19.09.2019	<p>Meeting to discuss emerging proposals within the Core Strategy Partial Review and Allocations DPD, as they could affect the areas adjacent to the boundaries of Bradford and Pendle. Key issues discussed were:</p> <ul style="list-style-type: none"> • Local Plan Updates • Growth and development within the Airedale sub-area including level of proposed housing and employment growth; • Environment including impacts on South Pennines SPA/SAC. • Emerging Lancashire Local Industrial Strategy; • Connectivity between East Lancashire, North Yorkshire and West Yorkshire • Access to health services in particular Airedale Hospital. 	<p>The key cross-boundary was identified as being transport connectivity between East Lancashire, North Yorkshire and West Yorkshire.</p> <p>It was noted that Pendle did not have any objections to the Bradford Local Plan Core Strategy: Partial Review.</p> <p>Engagement will continue through formal consultation on emerging Local Plan documents.</p>
<p>Activity: Duty to Co-operate Meeting: Harrogate Borough Council & North Yorkshire County Council</p> <p>Participants: City of Bradford Metropolitan District Council;</p>	24.09.2019	<p>Joint meeting to discuss emerging proposals within the Local Plan (Core Strategy Partial Review and Allocations DPD), as they could affect the areas adjacent to the boundaries of Harrogate</p>	<p>It was agreed that further discussions will be held between both councils as part of the on-going Duty to Co-operate requirement, particularly as further details emerge in relation to the Local Plan.</p>

Activity & Participants	Date	Purpose	Outcomes/Actions
Harrogate Borough Council; North Yorkshire County Council		Borough and North Yorkshire County. Key issues discussed were: <ul style="list-style-type: none"> • Local Plan updates; • Growth and development with Bradford district including level of proposed housing and employment growth; • Lessons learned from Harrogate Local Plan examination 	
<p>Activity: Duty to Co-operate Meeting: Leeds City Council</p> <p>Participants: City of Bradford Metropolitan District Council; Leeds City Council</p>	02.10.2019	Meeting to discussion key issues arising from the Core Strategy Partial Review: Preferred Options consultation (summer 2019). Key issues discussed included: <ul style="list-style-type: none"> • Proposed levels of growth and development in South East Bradford; • Level and distribution of housing and employment growth • Green infrastructure corridors • Proposals for transport infrastructure enhancement 	It was agreed that further discussions will be held between both councils as part of the on-going Duty to Co-operate requirement, particularly as further details emerge in relation to the Local Plan.
<p>Activity: Duty to Co-operate Response: Calderdale Council</p> <p>Participants: City of Bradford Metropolitan District Council; Calderdale Council</p>	20.11.2019	Response received from Calderdale Council to initial e-mail setting out their views on the initial cross-boundary issues identified.	It was considered that a number of points required further discussion/information to determine potential impacts on Calderdale, in particular: <ul style="list-style-type: none"> • Employment development in the South Bradford area; • Green Belt releases (including for housing and employment uses)

Activity & Participants	Date	Purpose	Outcomes/Actions
			<ul style="list-style-type: none"> • Impact on infrastructure from employment and housing development, including the need for it to be modelled in line with proposed growth in Calderdale; • More sharing of evidence and information; • Implications for the strategic and local road networks, and the need model the cross boundary impacts of growth in both areas on the network; • Joint working to deliver the A641 corridor project; • Need to address cross-boundary impacts of growth on education and health services;
<p>Activity: The Future of Working Across the South Pennines (Pennine Prospects Workshop)</p> <p>Participants: Bradford Council, Calderdale Council, Burnley Council, Yorkshire Water, Environment Agency, (+ many others).</p>	14.11.2019	Pennine Prospects are looking at their future role and governance arrangements. They are looking to promote the South Pennines area as a Regional Park. The workshop looked at how the different organisations can work collaboratively across the South Pennines.	-
<p>Activity: South Pennine Authorities Renewable and Landscape Group Meeting</p> <p>Participants: Barnsley Council, Bradford Council, Burnley Council, Calderdale Council, Hyndburn Council, Kirklees Council, Oldham Council,</p>	06.12.2019	Biannual meeting of the South Pennine Authorities – originally set up to discuss issues relating to wind turbine development. Now covers wider landscape and environmental issues. Agenda items discussed: Pennine Prospects workshop: The future of working across the South Pennines; Visitor Management Plan for the South Pennines; Views on the Government’s Green	The group helps to highlight planning policy issues relating to the South Pennines Area – specifically landscape impacts. Discussion focussed around the need for a Visitor Management Plan for the area and how this may be achieved. Highlighted the difference between a VMP and a visitor impact assessment relating to additional recreational pressures due to increased

Activity & Participants	Date	Purpose	Outcomes/Actions
Pendle Council, Rochdale Council, Rossendale Council.		Housing revolution; Future Home Consultation; Local Plan Updates.	population through new housing developments. Biannual meeting to continue to allow for further discussions and agreement on the way forward.
<p>Activity: Duty to Co-operate Meeting: Pendle Borough Council</p> <p>Participants: City of Bradford Metropolitan District Council; Pendle Borough Council</p>	03.02.2020	<p>Meeting to discuss emerging proposals within the Core Strategy Partial Review and Allocations DPD, as they could affect the areas adjacent to the boundaries of Bradford and Pendle. Key issues discussed were:</p> <ul style="list-style-type: none"> • Update on progress of both authorities Local Plans • Housing growth and distribution • Emerging Lancashire Local Industrial Strategy • Environment including impacts on South Pennines SPA • Connectivity between East Lancashire, North Yorkshire and West Yorkshire, including ongoing Government studies regarding road and rail connections; • Health infrastructure including use of Airedale Hospitals by East Lancashire residents. 	<p>It was noted that there are very limited cross boundary issues between Bradford and Pendle.</p> <p>The main issue relates to improving transport connectivity between East Lancashire, North Yorkshire and West Yorkshire to support growth and prosperity, as well as opening up new opportunities for cross-pennine journeys.</p> <p>It was suggested that as work progresses on the Bradford Local Plan that a joint statement between both councils will be needed to highlight the above.</p> <p>Further engagement will continue through formal consultation on emerging Local Plan documents.</p>
<p>Activity: Duty to Co-operate Meeting: Craven District Council</p> <p>Participants: City of Bradford Metropolitan District Council; Craven District Council</p>	04.02.2020	<p>Meeting to discuss emerging proposals within the Core Strategy Partial Review and Allocations DPD, as they could affect the areas adjacent to the boundaries of Bradford and Craven. Key issues discussed were:</p> <ul style="list-style-type: none"> • Update on progress of both authorities Local Plans 	<p>It was noted that the Craven Local Plan was adopted in November 2019, and that the council was a signatory to the Leeds City Region Statement of Common Ground.</p> <p>It was agreed that Craven would provide access to a GIS downloadable version of their Local Plan Policies Map. This will allow Bradford to add these layers to its constraints and other mapping to</p>

Activity & Participants	Date	Purpose	Outcomes/Actions
		<ul style="list-style-type: none"> • Level and distribution of growth within Bradford district, in particular in Steeton with Eastburn. • Highways • Education; and • Green infrastructure 	<p>identify future growth and development close to the boundary between the authorities as well as key blue and green infrastructure corridors and other designations. This help to ensure a degree of consistency.</p> <p>It was agreed that further discussions will take place as work progresses on the Bradford Local Plan in order to identify future implications for Craven.</p> <p>Further engagement will continue through formal consultation on emerging Local Plan documents.</p>
<p>Activity: Duty to Co-operate Meeting: Wakefield Council</p> <p>Participants: City of Bradford Metropolitan District Council; Wakefield Council</p>	06.02.2020	Meeting to discuss emerging proposals within the Bradford Local Plan, as they could affect the Bradford and Wakefield.	<p>It was agreed that further discussions will take place as work progresses on the Bradford Local Plan in order to identify future implications for the Wakefield area.</p> <p>Further engagement will continue through formal consultation on emerging Local Plan documents.</p>
<p>Activity: Duty to Co-operate Meeting: North Yorkshire County Council</p> <p>Participants: City of Bradford Metropolitan District Council; North Yorkshire County Council</p>	17.02.2020	<p>Meeting to discuss emerging proposals within the Bradford Local Plan, as they could affect the areas adjacent to the boundaries of Bradford and the National Park. Key issues/topics discussed:</p> <ul style="list-style-type: none"> • Impacts of growth and development in the north western portion of Bradford District on demand for education places in North Yorkshire; • Connectivity between East Lancashire, North Yorkshire and West Yorkshire including Bradford 	<p>It was agreed that further discussions will take place as work progresses on the Bradford Local Plan in order to identify future implications for the North Yorkshire area.</p> <p>Further engagement will continue through formal consultation on emerging Local Plan documents.</p>

Activity & Participants	Date	Purpose	Outcomes/Actions
		<ul style="list-style-type: none"> • Environmental matters including biodiversity net-gain. • North Yorkshire, York & East Riding long term growth strategy. Airedale has identified as a key growth corridor – based links between East Lancashire and North and West Yorkshire. 	
<p>Activity: Duty to Co-operate Meeting: Yorkshire Dales National Park Authority</p> <p>Participants: City of Bradford Metropolitan District Council; Yorkshire Dales National Park Authority</p>	17.02.2020	<p>Meeting to discuss emerging proposals within the Bradford Local Plan, as they could affect the areas adjacent to the boundaries of Bradford and the National Park. Key issues/topics discussed:</p> <ul style="list-style-type: none"> • Local plan updates • Role of the national park and its links to the wider hinterland including Bradford district, including accessibility to residents and improved health and well-being. • Flood risk/management, particularly at the river catchment. It was identified that the national park exports risk • Biodiversity, in particular the emerging policy of bio-diversity net gain and how it would benefit the national park; • Water supply. It was noted that two reservoirs in the national park supply water to Bradford, however no major impacts are expected. • Minerals. It was noted that the national park was home to a number of aggregate quarries provide supply to West Yorkshire. 	<p>It was agreed that further discussions will take place as work progresses on the Bradford Local Plan in order to identify future implications for the National Park</p> <p>Further engagement will continue through formal consultation on emerging Local Plan documents.</p>

Activity & Participants	Date	Purpose	Outcomes/Actions
<p>Activity: Duty to Co-operate Meeting: Harrogate Borough Council</p> <p>Participants: City of Bradford Metropolitan District Council; North Yorkshire County Council</p>	19.02.2020	<p>Meeting to discuss emerging proposals within the Bradford Local Plan, as they could affect the areas adjacent to the boundaries of Bradford and Harrogate. Key issues/topics discussed:</p> <ul style="list-style-type: none"> • Local Plan updates • Levels and location of housing and employment growth • Environment including Green and Blue infrastructure • Transport infrastructure improvements 	<p>It was agreed that further discussions will take place as work progresses on the Bradford Local Plan in order to identify future implications for North Yorkshire</p> <p>Further engagement will continue through formal consultation on emerging Local Plan documents.</p>
<p>Activity: Duty to Co-operate Meeting: Kirklees Council</p> <p>Participants: City of Bradford Metropolitan District Council; Kirklees Council</p>	20.02.2020	<p>Meeting to discuss emerging proposals within the Bradford Local Plan, as they could affect the areas adjacent to the boundaries of Bradford and Kirklees. Key issues/topics discussed:</p> <ul style="list-style-type: none"> • Levels of growth and development in south and south east Bradford including housing and employment uses; • Transport infrastructure 	<p>It was agreed that further discussions will take place as work progresses on the Bradford Local Plan in order to identify future implications for Kirklees. Where appropriate it was agreed to share information and evidence as proposals emerge.</p> <p>Further engagement will continue through formal consultation on emerging Local Plan documents.</p>
<p>Activity: Duty to Co-operate Meeting: Leeds City Council</p> <p>Participants: City of Bradford Metropolitan District Council; Leeds City Council</p>	03.03.2020	<p>Meeting to discuss emerging proposals within the Bradford Local Plan, as they could affect the areas adjacent to the boundaries of Bradford and Leeds. Key issues/topics discussed:</p> <ul style="list-style-type: none"> • Green infrastructure links • Proposed regeneration areas and their notation on the key diagram. 	<p>It was agreed that further discussions will be held between both councils as part of the on-going Duty to Co-operate requirement, particularly as further details emerge in relation to the Bradford Local Plan, with a focus on the matters highlighted adjacent.</p> <p>Further engagement will continue through formal consultation on emerging Local Plan documents</p>

Activity & Participants	Date	Purpose	Outcomes/Actions
		<ul style="list-style-type: none"> Proposed levels of growth and development in south east Bradford, including infrastructure provision; Transport infrastructure/networks Freight provision, in particular in South Bradford; and Gypsy & Traveller accommodation 	
<p>Activity: Engagement with Historic England regarding the development of Heritage Impact Assessments for site in the Local Plan.</p> <p>Participants: City of Bradford Metropolitan District Council; Historic England</p>	11.03.2020 (on-going)	Several e-mail exchanges with Historic England to establish early engagement and involvement in the development of the methodology for the Heritage Impact Assessments (HIAs) for sites in the Local Plan. To obtain agreement from Historic England as to the level of input into the process.	A positive response from Historic England and agreement to help provide advice and comments on the methodology for the HIAs on all relevant sites.
<p>Activity: Meeting with Kirklees Council</p> <p>Participants: City of Bradford Metropolitan District Council; Kirklees Council</p>		Meeting to provide an over update on the emerging Bradford Local Plan, in particular proposals for growth in South East Bradford close to the local authority boundary with Kirklees.	It was noted that further work will be undertaken on several proposed as the plan is developed. Kirklees will review consultation documents when published.

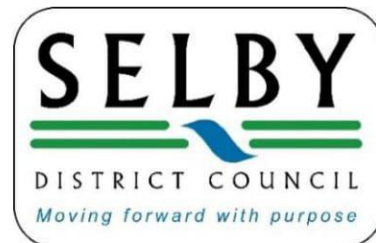
Appendix 5: Statement of Common Ground Template

STATEMENT OF COMMON GROUND BETWEEN CITY OF BRADFORD METROPOLITAN DISTRICT COUNCIL AND [INSERT NAME OF BODY], [INSERT DATE]

Governance and Working Arrangements
Engagement on Cross Boundary Matters
Key Issue and Outcome
Ongoing Joint Working
Signed on behalf of [insert name of body]
Name & Position:
Signature:
Date:
Signed on behalf of City of Bradford Metropolitan District Council
Name & Position:
Signature:
Date:

Leeds City Region Statement of Common Ground

March 2020



1.0 Introduction

- 1.1 The Leeds City Region partner councils have prepared this Statement of Common Ground in response to the requirement as set out in the revised [National Planning Policy Framework](#) (NPPF) published in February 2019.
- 1.2 The approach set out in this Statement of Common Ground is in accordance with the requirements within the Government's [Planning Practice Guidance](#).

2.0 Geographical Area

- 2.1 It has been jointly determined that this Statement of Common Ground will cover the geographical area as illustrated in Figure 1. The justification for the choice of this geography is a combination of:
 - The existence of governance frameworks including the Leeds City Region Local Enterprise Partnership (LEP), West Yorkshire Combined Authority and associated Panels.
 - Evidence to support this geography as a functioning economic area and existence of a comprehensive evidence base and a shared policy position on economic growth as set out in the [Strategic Economic Plan](#) (SEP).
 - The existence of well-established, common approaches and tools used by authority partners to address duty-to-cooperate requirements, (as set out in the Leeds City Region Statement of Cooperation for Local Planning (Revised 2018)).
- 2.2 The Partner Councils are 'parties' responsible for developing and maintaining the Statement of Common Ground and are listed below.

Parties

Barnsley Metropolitan Borough Council
City of Bradford Metropolitan District Council
The Borough Council of Calderdale
Craven District Council
Harrogate Borough Council
The Council of the Borough of Kirklees
Leeds City Council
Selby District Council
The Council of the City of Wakefield
City of York Council
West Yorkshire Combined Authority
North Yorkshire County Council

- 2.3 Also listed below are the Prescribed Bodies as identified in NPPF, these bodies (where relevant) will be notified of the publication of this Statement of Common Ground and invited to support its objectives.

Prescribed Bodies

- The Environment Agency
- The Historic Buildings and Monuments Commission for England (known as Historic England)
- Natural England
- The Mayor of London (not relevant in this region)
- The Civil Aviation Authority
- The Homes and Communities Agency
- Each clinical commissioning group established under section 14D of the National Health Service Act 2006
- The National Health Service Commissioning Board
- The Office of Rail Regulation
- Transport for London (not relevant in this region)
- Each Integrated Transport Authority
- Each highway authority within the meaning of section 1 of the Highways Act 1980 (including the Secretary of State, where the Secretary of State is the highways authority)
- The Marine Management Organisation

Figure 1 – Leeds City Region Statement of Common Ground Administrative Areas



3.0 Governance Process

- 3.1 This Statement of Common Ground will be approved and kept under review by the parties as listed in Section 2.2 of the Statement.
- 3.2 The West Yorkshire Combined Authority Place Panel provides oversight on joint-working on planning matters, all Leeds City Region partner councils are represented on this panel. The functions of the Place Panel include evidencing compliance with the statutory duty to cooperate in relation to planning of sustainable development.
- 3.3 The Leeds City Region Statement of Cooperation for Local Planning (March 2016) sets out the cooperation process in the Leeds City Region.

4.0 Monitoring and Review

- 4.1 This Statement of Common Ground will be kept under review and maintained to reflect the most up-to-date and readily available information. A review by the LPA's and the Prescribed Bodies to establish whether the document needs to be updated will be carried out annually.
- 4.2 When updating this Statement the adoption of neighbouring, or overlapping, statements of common ground covering other geographical areas will be reflected.

5.0 Leeds City Region Joint Working on Planning Matters

- 5.1 As a polycentric economic area there are centres of different economic strength including Barnsley, Bradford, Halifax, Harrogate, Huddersfield, Selby, Skipton, Wakefield and York which surround the economic core of Leeds.
- 5.2 Interdependencies and commuting movements are complex and have resulted in a strong history of collaboration on spatial planning issues across the Leeds City Region. The polycentricity of the sub region has driven patterns of growth and our collective approach to planning. Our approach is to prepare complementary local plans that collectively reflect a shared ambition for inclusive and sustainable growth.
- 5.3 An [interactive infrastructure map](#) has been prepared in partnership with all partner councils for the purposes of sharing spatial information on infrastructure and planned growth. The map provides a collective position on current (or emerging) local plan growth and spatial priority areas. It can also be used to identify / illustrate cross boundary matters and to consider infrastructure needs and inter-relationships between infrastructure types.
- 5.4 Collaboration on planning matters results in better planning outcomes and is undertaken between partner councils for a number of reasons, including:
 - The main functional trends and drivers for change that affect places operate at a spatial scale above local authority level. Housing markets, commercial

property markets, labour markets, business agglomeration effects and supply chains, travel to work areas, utilities networks and water catchments for example do not stop at local authority boundaries. In the context of the Duty to Cooperate, understanding these greater-than-local trends and engaging with partners to identify and resolve issues is essential.

- There is a collective interest across partner councils in the success of the most strategically important places of growth, regeneration and change, including growth corridors that will drive the city region's economy. Local policy development cannot be undertaken in isolation, partner councils within the Leeds City Region are actively engaged in identifying and promoting / delivering strategic priorities.
- Planning policy at a local authority level relies, to some extent, on an evidence base and technical work developed across local authority boundaries because the matters being considered have cross boundary implications. Examples of this include economic forecasts, population and household projections, analysis of opportunities and constraints relating to infrastructure, supply and demand for minerals and data analysis on waste arisings. All of these areas of policy will benefit from technical work based on a geography that is wider than the local authority level.

6.0 Planning for Housing in the Leeds City Region

- 6.1 The unique geography of the Leeds City Region determines that the partner councils have a close, but not dependent, relationship on each other for accommodating housing need.
- 6.2 The existing and emerging suite of Local Plans set out the approach to meeting local housing need. In development of these plans partner councils consider what the most sustainable local patterns of development are, undertaking local green belt reviews where necessary.
- 6.3 There are specific settlements and areas of open countryside where cross-boundary cooperation on the most effective and sustainable patterns of development are required. These areas are an ongoing focus for detailed Duty to Cooperate work on a bilateral basis between partner councils.
- 6.4 With regard to housing need all Leeds City Region Local Planning Authorities are planning for their own need within their own Local Authority boundaries. For the avoidance of doubt, based on current plan targets (some draft) there is no housing shortfall or distribution of unmet need required.
- 6.5 Cumulative housing targets for the Leeds City Region:
- 12,350 dpa (Local Plan targets at January 2020 – some draft)

Refer to Appendix 1 for full local authority breakdown of housing need figures and targets.

7.0 Matters on Which Parties Agree

- 7.1 The following have been identified as matters on which the parties agree relating to the strategic matters of Inclusive Growth, Housing, Green belt, Employment, Transport, Minerals and Waste, Climate Change, Environment, Health and Well-being, and Education.

Inclusive Growth

Parties agree to:

- 1) maintain progress on local plans in line with indicative timetables to ensure we are collectively and proactively planning for inclusive / sustainable growth.
- 2) consider local plan timescales in the context of emerging strategic priorities recognising the benefits of alignment for cross-boundary working.
- 3) maintain and strengthen the existing robust and proportionate evidence base to give a clear understanding of economic forecasts, housing needs, infrastructure capacity constraints and opportunities and environmental constraints and characteristics.
- 4) adopt common approaches to viability across the city region.
- 5) take account of the Leeds City Region and York, North Yorkshire and East Riding Strategic Economic Plans and the emerging Leeds City Region and York, North Yorkshire and East Riding Local Industrial Strategies and supporting Strategic Economic Frameworks in preparing local plans.
- 6) take account of economic forecasts from the Regional Econometric Model (REM) in undertaking modelling for local plans.
- 7) ensure that local plans drive transformation of economic, environmental and social conditions in the seven urban growth centres of Bradford, Halifax, Huddersfield, Leeds (including the South Bank), Wakefield, Barnsley and York, (as Spatial Priority Areas (SPAs) identified in the Leeds City Region SEP) including spreading the benefits of continued growth of the Leeds economy as the City Region's economic centre.

Housing

Parties agree to:

- 8) plan for between 10,000 and 13,000 additional homes per year in the Leeds City Region up until 2031 as stated in the Leeds City Region SEP.
- 9) include the calculation of housing need figures based upon the Government's finalised methodology for calculating local housing need¹, taking account of economic uplift / market conditions as necessary in preparation of local plans.
- 10) to plan for their own need within their own Local Authority boundaries taking account of housing market geographies as detailed in the shared evidence report '[Leeds City Region Housing Market Areas' \(CURDS July 2016\)](#), as updated by local strategic housing market assessments.
- 11) use the plan making system to maximise delivery of affordable housing.

¹ with the exception of local planning authorities who have submitted local plans for examination prior to 24th January 2019 (i.e. the revised NPPF transitional period).

- 12) explore the opportunity to improve the quality of new housing through development plan policy reflecting an ambition to drive consistent, high quality design standards across the Leeds City Region.
- 13) ensure that local plans drive housing delivery in the six housing growth areas of Bradford-Shipley Canal Road corridor, Castleford Growth Zone, East Leeds Extension, North Kirklees Growth Zone and Wakefield City Fields, plus York Central (as SPAs identified in the Leeds City Region SEP).
- 14) Ensure housing and employment growth are planned holistically in order to ensure sustainable patterns of development across the city region.

Green belt

Parties agree to:

- 15) undertake local reviews of green belt as required in preparing local plans where consideration of reasonable options for meeting development needs by other means has taken place.

Employment

Parties agree to:

- 16) plan for employment growth of 35,700 net additional jobs above baseline job growth projections to 2036 in the Leeds City Region as a shared ambition identified in the Leeds City Region SEP.
- 17) ensure that local plans drive employment growth in the 16 employment growth areas as identified in the Leeds City Region SEP. These include mixed use sites and the [Enterprise Zones](#) (EZs) of York, Leeds (Phase 1 Leeds City Region EZ) and the 10 sites across the five West Yorkshire districts which are located along key arterial routes of M1, M62 and M606 corridors (Phase 2 Leeds City Region EZ).

Transport

Parties agree to:

- 18) support the delivery of objectives and targets in the [Transport for the North Strategic Transport Plan](#) (2019), [West Yorkshire Transport Strategy 2040](#), [North Yorkshire Local Transport Plan \(2016-2045\)](#), [Leeds City Region HS2 Growth Strategy \(2018\)](#), [West Yorkshire Low Emissions Strategy \(2016 – 2021\)](#), [Sheffield City Region Transport Strategy 2040](#), emerging rail strategy and emerging Leeds City Region Connectivity Strategy.
- 19) support the safeguarding and delivery of critical strategic routes and collaborate across boundaries (including beyond the Leeds City Region) to make best use of inter-regional road, rail and water transport networks including for the purposes of freight movements and to enable use of the most sustainable modes.
- 20) plan for significant transport infrastructure in the Leeds City Region including planning for an integrated mass transit system for West Yorkshire.

- 21) align funding opportunities to deliver strategic growth objectives to ensure that development plans are deliverable; with a particular focus on SPAs as identified in the Leeds City Region SEP and where significant growth is identified in emerging local plans.
- 22) maintain support for strategic transport infrastructure that directly underpins housing and employment growth, particularly where this enables allocations to be fully developed contributing to the supply of new homes and/or jobs.

Minerals and Waste

Parties agree to:

- 23) sharing data / information both within and beyond the Leeds City Region on minerals and waste matters and to maintaining a shared, proportional evidence base including keeping up-to-date the West Yorkshire Waste Model (for relevant partner councils), undertaking regular waste capacity gap analysis and jointly preparing and aligning Local Aggregate Assessments (LAAs) on an annual basis.
- 24) review a joint position on safeguarding of wharves and rail sidings.
- 25) encourage the movement of Marine Aggregates into the Leeds City Region to help maintain an adequate supply and reduce pressure on sensitive land resources.

Climate Change

Parties agree to:

- 26) work towards contributing to the national target of being carbon neutral by 2050 alongside local targets and targets in national and local climate emergency declarations, and collaborating where appropriate to accelerate progress towards a carbon neutral city region.
- 27) specifically, reflect in local plans or supplementary planning policy the commitment of the [Leeds City Region Climate Coalition](#) and the [Leeds City Region Energy Strategy and Delivery Plan](#) to become a net zero carbon City Region by 2038 at the latest with significant progress by 2030².

Environment:

Parties agree to:

- 28) reflect in local plans the commitments in the [Leeds City Region Green and Blue Infrastructure Strategy and Delivery Plan](#), supporting shared ambitions to improve green and blue infrastructure (particularly in areas of poor health and deprivation).
- 29) work collaboratively to prepare catchment wide evidence on all forms of flooding; to increase the collective understanding of Natural Flood Risk Management and sustainable drainage systems; and ensure best practice on flood risk management in Local Plans and Development Management

² Leeds City Council have a stated target to be a net zero carbon city by 2030.

decisions, with a view to making the Leeds City Region an exemplar of good practice.

- 30) ensure net biodiversity gains are achieved for developments across the city region.

Health and Well-being:

Parties agree to:

- 31) understand the pipeline of housing development and its potential to deliver healthy places through plan making, including working closely with Clinical Commissioning Groups.

Education:

Parties agree to:

- 32) ensure sufficient provision is made for the education needs arising from new development, including the creation, expansion and alteration to schools.

Appendix 1 – Leeds City Region Partner Councils Housing Requirements (as of March 2020)

Local Authority	Adopted Local Plan		Emerging Local Plan		Notes on Adopted/Emerging Local Plan Requirement
	Standard Method for Calculating Local Housing Need ³ (dpa)	Local Plan Housing Requirement ⁴ (dwellings per annum (dpa))	Standard Method for Calculating Local Housing Need ³ (dpa)	Local Plan Housing Requirement ⁴ (dpa)	
Barnsley	1,134*	1,134	-	-	Adopted Local Plan (Jan 2019). Plan period 2014-2033. Plan period Requirement 21,546. *Based upon Objectively Assessed Need.
Bradford	2,476	2,476	1,703	1,703	Adopted Core Strategy (July 2017) 42,100 over period 2013-2030. Emerging Core Strategy: Partial Review Preferred Options Consultation (July 2019). Plan period 2020-2037. Plan period Requirement 28,951.
Calderdale	-	450	818 [#]	997*	Adopted Replacement Unitary Development Plan (August 2006) Amended by SoS August 2009. 6,750 dwellings between 2001 - 2016. Emerging Local Plan: Revised Housing Requirement following Stage 1 Hearings (October 2019). Period 2018/19-2032/33. Plan period Requirement 14,950. [#] For period 2018-2028, 2018 Affordability Ratio. *per annum average. Awaiting outcome of Examination with regard to the stepping of

³ Planning Practice Guidance (Housing and economic needs assessment, Para 010) states 'The standard method for assessing local housing need provides a minimum starting point in determining the number of homes needed in an area.'

⁴ NPPF (Para 65) states: 'Strategic policy-making authorities should establish a housing requirement figure for their whole area, which shows the extent to which their identified housing need (and any needs that cannot be met within neighbouring areas) can be met over the plan period.'

					housing throughout the plan period.
Craven	123	230	-	-	Adopted Local Plan (November 2019). The standard method for Calculating Local Housing Need is taken from latest MHCLG figures for the Housing Delivery Test for 2017/18.
Harrogate	390	637	-	-	Adopted Local Plan (March 2020). Plan period 2014-2035. Plan period requirement 13,377.
Kirklees	1,730*	1,730	-	-	Adopted Local Plan (Feb 2019). Plan period 2013-2031. Plan period Requirement 31,140. *At the time the Local Plan was examined the latest published government Local Housing Need Assessment by district stated 1,707 dpa for Kirklees. The 1,730 dpa figure in this table is based upon Objectively Assessed Need as set out in the recently adopted Local Plan.
Leeds	2,649	3,247	-	-	Adopted Core Strategy Selective Review (Sept 2019). Plan period 2017-2033. Plan period Requirement 51,952.
Selby	450	450	365	TBC	Adopted Local Plan (Oct 2013). Emerging Local Plan: The Issues and Options document will be consulted upon between 24 January and 6 March 2020 which comprises the first stage of the Local Plan. The Local Plan housing requirement figure has yet to be established but will be informed by a new Housing and Economic Development Needs Assessment, responses to the Issues and Options consultation and early discussions with Duty to Cooperate partners.

Wakefield	977	1,600*	977	1,400	<p>Adopted Core Strategy (April 2009) 2008-2026. *This figure is now out of date when para. 73 of the NPPF is applied.</p> <p>Emerging Local Plan: Initial Draft (Dec 2018). Plan period 2017/18-2035/36 (19 years). Local Plan Requirement will be a range, currently 977 - 1,400 dpa. Local Plan period Requirement range (18,563 - 26,600). The bottom of these ranges will change annually when new data is published to allow recalculation using the standard method.</p>
York	-	-	-	822	<p>Draft Local Plan Incorporating the 4th set of changes (Approved April 2005).</p> <p>Emerging Local Plan submitted for Examination on 25 May 2018. Proposed Modification (June 2019) to Publication version of the Plan to identify a housing requirement of 822 dpa based upon an updated OAN of 790 dpa plus inherited shortfall/backlog from 2012 to 2017. Plan period 2017-2032/33.</p>
Total				12,350*	<p>*If a Local Authority is not currently developing a Local Plan the adopted local plan housing requirement has been used to calculate the total City Region figure.</p>

Leeds City Region SEP Scenario	10,239 – 12,948 (mid-point 12,038)	Based on economic growth scenario Jobs-led (REM) EA2 (see paragraph 3.8). This scenario provides a useful starting point in establishing the general scale of growth across the City Region; however, the economic scenario for the City Region does not constitute Objectively Assessed Need.
---------------------------------------	---------------------------------------	--

Appendix 2 – Document References

National Documents:

<https://www.gov.uk/government/publications/national-planning-policy-framework--2> - National Planning Policy Framework

<https://www.gov.uk/government/collections/planning-practice-guidance> - National Planning Practice Guidance

Sub-national Documents:

<https://transportforthenorth.com/wp-content/uploads/TfN-final-strategic-transport-plan-2019.pdf> - Transport for the North, Strategic Transport Plan (February 2019)

Leeds City Region Documents:

<https://www.westyorks-ca.gov.uk/growing-the-economy/economic-strategy/> - Leeds City Region Strategic Economic Plan (May 2016)

<https://www.westyorks-ca.gov.uk/growing-the-economy/leeds-city-region-infrastructure-map/> - Leeds City Region Infrastructure Map

<https://www.the-lep.com/media/2263/lcr-hma-final-report-oct16.pdf> - Leeds City Region Housing Market Areas, CURDS (July 2016)

<https://www.westyorks-ca.gov.uk/projects/priority-4d-enterprise-zones/> - Leeds City Region Enterprise Zones

<https://www.westyorks-ca.gov.uk/improving-transport/leeds-city-region-hs2-growth-strategy/> - Leeds City Region HS2 Growth Strategy (2018)

<https://www.westyorks-ca.gov.uk/all-news-and-blogs/politicians-businesses-and-young-people-join-forces-as-leeds-city-region-climate-coalition/> - Leeds City Region Climate Coalition Article (10 July 2019)

<https://www.westyorks-ca.gov.uk/media/2424/leeds-city-region-energy-strategy.pdf> - Leeds City Region Energy Strategy and Delivery Plan (December 2018)

<https://www.westyorks-ca.gov.uk/media/2432/leeds-city-region-green-and-blue-infrastructure-4-page-final.pdf> - Leeds City Region Green and Blue Infrastructure Strategy and Delivery Plan – Executive Summary

West Yorkshire Documents:

<https://www.westyorks-ca.gov.uk/media/2379/transport-strategy-2040.pdf> - West Yorkshire Transport Strategy 2040

<https://www.bradford.gov.uk/media/3590/west-yorkshire-low-emissions-strategy.pdf> - West Yorkshire Low Emissions Strategy (2016-2021)

Partner Council Documents:

<https://www.barnsley.gov.uk/services/planning-and-buildings/local-planning-and-development/our-new-local-plan/barnsleys-local-plan/> - Barnsley Adopted Local Plan (January 2019)

<https://www.bradford.gov.uk/Documents/planningStrategy/adopted%20core%20strategy/10/Adopted%20core%20strategy//1%20Core%20Strategy%20full%20document.pdf> – Bradford Adopted Core Strategy (July 2017)

<https://www.calderdale.gov.uk/v2/sites/default/files/replacement-unitary-development-plan.pdf> - Calderdale Adopted Replacement Unitary Development Plan (August 2006) (Amended by SoS August 2009)

<https://www.cravendc.gov.uk/media/8733/z-local-plans-ldf-314-local-plan-adoption-2019-lp-adoption-docs-final-adoption-local-plan-pdfs-craven-local-plan-appendices-and-policies-map.pdf> - Craven Adopted Local Plan (November 2019)

https://www.harrogate.gov.uk/info/20101/planning_policy_and_the_local_plan - Harrogate District Adopted Local Plan (March 2020)

<https://www.kirklees.gov.uk/beta/planning-policy/pdf/local-plan-strategy-and-policies.pdf> - Kirklees Adopted Local Plan, Strategy & Policies (February 2019)

<https://www.leeds.gov.uk/Local%20Plans/Adopted%20Core%20Strategy/Consolidated%20Core%20Strategy%20with%20CSSR%20Policies%20Sept%202019.pdf> – Leeds Adopted Core Strategy Selective Review (September 2019)

https://www.selby.gov.uk/sites/default/files/Documents/CS_Adoption_Ver_OCT_2013_REDUCED.pdf - Selby Adopted Core Strategy Local Plan (October 2013)

<http://www.wakefield.gov.uk/Documents/planning/planning-policy/local-plan/core-strategy/core-strategy.pdf> - Wakefield Adopted Core Strategy (April 2009)

https://www.york.gov.uk/downloads/file/3663/the_local_plan_2005_-_development_control_local_plan_full_document_and_appendicespdf - City of York Draft Local Plan Incorporating the 4th set of changes (Approved April 2005).

Other Documents:

<https://www.northyorks.gov.uk/local-transport-plan> - North Yorkshire Local Transport Plan

https://d2xjf5riab8wu0.cloudfront.net/wp-content/uploads/2019/03/SCR_Transport_Report-v4.5-04.06.19.pdf - Sheffield City Region Transport Strategy 2040



Find out more

westyorks-ca.gov.uk

@WestYorkshireCA

customerfeedback@westyorks-ca.gov.uk

+44 (0)113 251 7272

All information correct at time of print (September 20)